

**TECU® Brass**  
**TECU® Bronze**  
**TECU® Gold**



Copper Alloys  
for Façade Cladding

KME Germany AG  
TECU® Brass  
TECU® Bronze  
TECU® Gold  
[GB]



*Member of the  
KME Group*

TECU® Brass	2
TECU® Bronze	6
TECU® Gold	10
TECU® System Products Overview	14
TECU® Sizes and Availability	18
TECU® Project Consulting	20
TECU® References	22



*TECU® quality copper alloys are exciting new highlights in façade design. Lively, distinctive and durable – typical of TECU® products. High-quality, easy to work with and with the same striking aesthetic qualities as in the whole line of TECU® surfaces – but with their own individual character.*



*TECU® Brass, TECU® Bronze and TECU® Gold offer architects completely new creative possibilities for façade solutions – with unmistakable, high-quality surfaces that are just as astounding and inspiring as copper itself.*

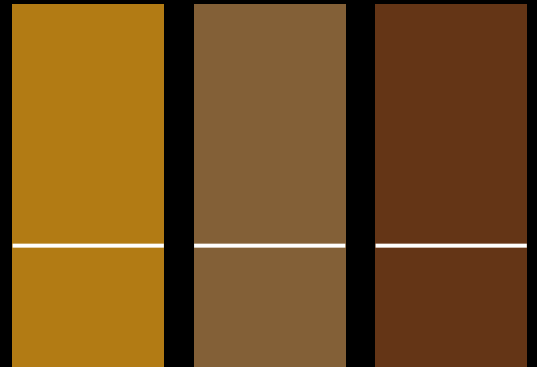




*innovative ...*



## *Ideas in brass – modern and expressive*



Time tested as an alloy, redefined for architecture: Brass, one of the best known copper materials, is now available in the new TECU® Brass grade, created by blending a special alloy of copper and zinc. The result is an extremely robust façade material that changes dramatically when exposed to the atmosphere, as uniquely as pure copper.

Weathering changes the original reddish golden colour of TECU® Brass; after the initial matting the surface takes on a greenish brown tone, which slowly turns greyish brown before evolving into a dark brown-anthracite colour. On sloping surfaces, patina layer – typical of copper, yet totally unique – gradually develops.

The individual aesthetic features have further impressive advantages: TECU® Brass offers outstanding mechanical abrasion resistance, extremely high corrosion resistance and durability as well as exceptional stability and material rigidity. The material can be cold-formed exceptionally well and is easy to solder. Because of its special material properties TECU® Brass is also ideally suited for large-scale applications.

The surface of TECU® Brass is covered with a protective film for safe transporting and working on the construction site. The protective film should be removed immediately after installation.









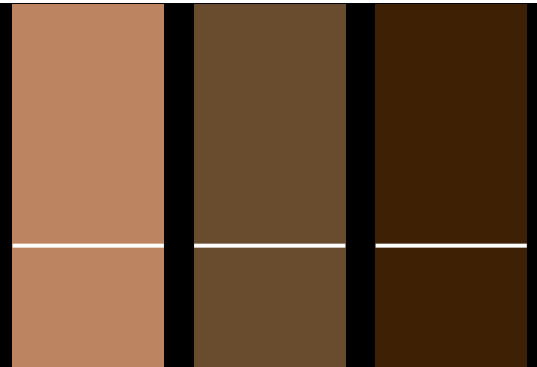
*aesthetic ...*

Bronze – an alloy of copper and tin and also a synonym for metallic works of art. While artists have long benefited from its properties, architects are now also able to make optimum use of the material – for more individuality in façade design.

The original warm reddish-brown colour of TECU® Bronze develops distinctively through weathering. Typical for this alloy is a brown-red oxidation of the surface with brown-grey undertones; the material then very gradually changes to dark brown anthracite throughout. The subsequent patina coating forms much more slowly than with traditional copper – and with very singular results.

TECU® Bronze also offers a number of economic and technical advantages, including outstanding mechanical abrasion resistance, extremely high corrosion resistance and durability, as well as exceptional stability and material rigidity. The material can be cold-formed exceptionally well and is simple to join by soldering or brazing.

The surface of TECU® Bronze is covered with a protective film for safe transporting and working on the construction site. The protective film should be removed immediately after installation.



*Offering architecture new perspectives*





*communicative ...*



## *A copper combination – as good as gold*

Gold doesn't always have to glitter: TECU® Gold, a new copper-aluminium alloy for façade cladding, oxidises very soon after it has been installed on the building – gradually forming a striking warm golden surface which, although it doesn't glitter, is still unmistakably reminiscent of a valuable precious metal.

Façades clad with TECU® Gold have a distinctive, pleasing and unique quality. So this impression lasts, the surface changes very little over time. Further colour changes due to patination processes are hardly noticeable on the façade surfaces.

TECU® Gold is a CuAl<sub>5</sub>-grade alloy of copper and aluminium. When subjected to the influences of the weather the original greenish golden tone develops its own unique character. Like all TECU® quality alloys, TECU® Gold also offers outstanding mechanical abrasion resistance, extremely high corrosion resistance and durability as well as exceptional stability and material rigidity. The material can be easily cold-formed and processed with the manual techniques that are normally used for copper. Because of its special material properties TECU® Gold is also ideally suited for large-scale applications.

The surface of TECU® Gold is covered with a protective film for safe transporting and working on the construction site. The protective film should be removed immediately after installation.

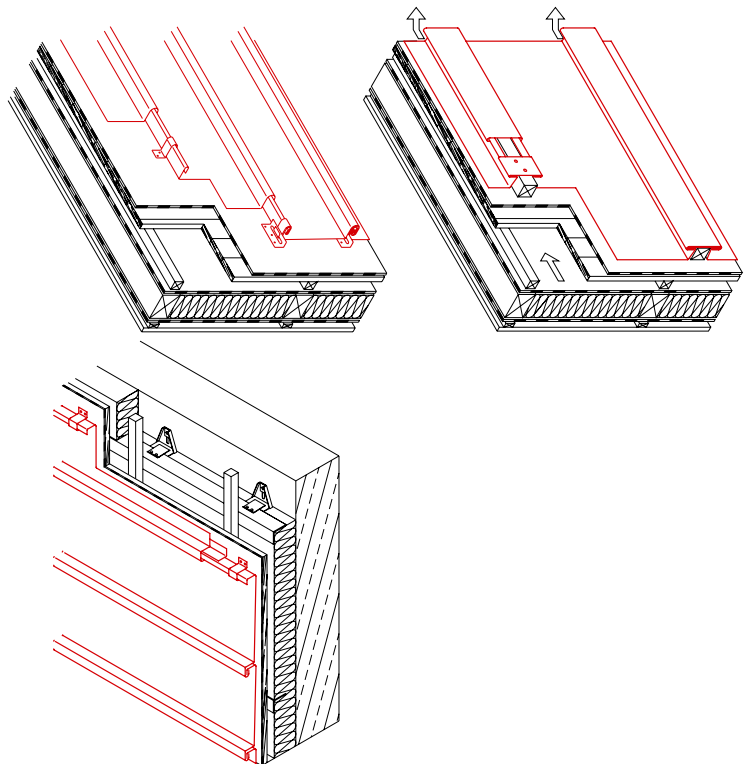


# TECU® System Products Overview

## TECU® Sheets and Strips for Seamed and Batten Cap Cladding

Ideal for custom designed free forms as well as the traditional roof and façade construction design: using angle standing seams and batten cap cladding. TECU® products for these types of cladding are available in sheets and strips.

The modern use of rolled copper in facade and roofing, the higher product quality requirements and the development of new, more demanding techniques for metalworking mean that copper has to meet much higher expectations today than ever before. TECU® sheets and strips for facade and roofing are manufactured in accordance with EN 1172 and KME's own strict quality control guidelines. Material tolerances for dimensions and properties are well within or even tighter than standard limits, and further processing by machine or hand is considerably easier.

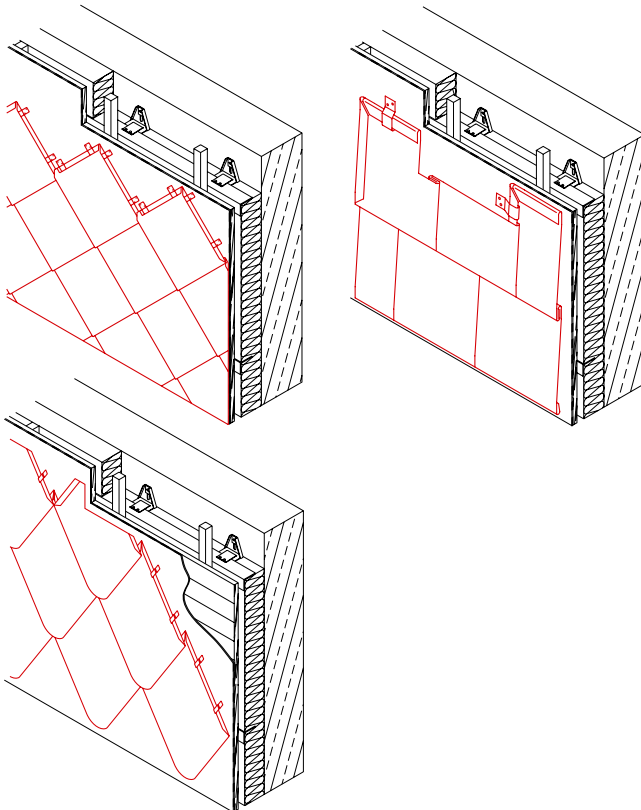




**TECU® System Shingles**  
**TECU® System Rhomboids**

Besides their special aesthetic qualities, TECU® System Shingles and TECU® System Rhomboids offer decisive economic advantages in façade design: cladding elements are laid simply by hanging them and interlocking them with each other.

The shingles and diamond system shingles have a 180° border on all sides. Two sides are provided with a fold coming forward or with a downstand. The individual elements are available as left or right tiling. All folds and notches are automatically pre-processed in the factory. At the edges, all the usual processing techniques such as bevelling, folding and bending can be used. This ensures that the corners of buildings and connections to other constructional elements such as windows and doors are completely weatherproof.



## TECU® Panels

TECU® Panels are two-sided cladding elements, with or without an end base, depending on the construction. Individual lengths are as long as 4,000 mm with a standard width of up to approx. 500 mm. Assembly at the building site is performed according to the tongue and groove principle or by overlapping.

The panels can be assembled in various directions – vertically, horizontally or diagonally. There are three basic forms, depending on the design:

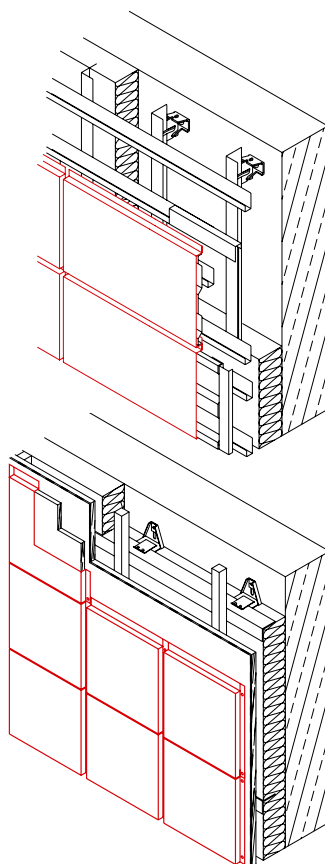
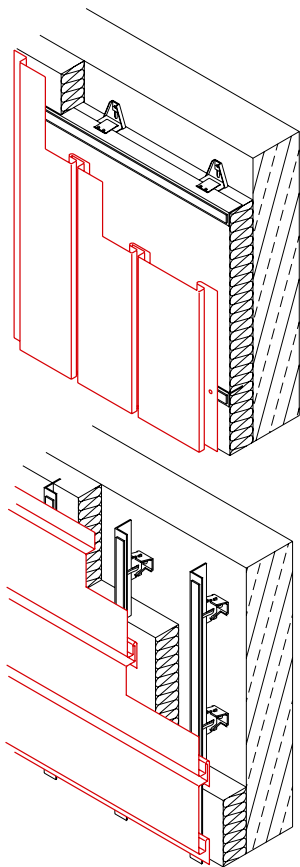
- Slot-in panels laid vertically as a level surface facade cladding
- Slot-in panels laid horizontally as a level surface facade cladding
- Special panels with visible or concealed fixings, laid in various ways, with a level surface or overlapped.

## TECU® Cassettes

TECU® Cassettes are cladding elements with folded edges on all sides available in a range of geometrical proportions from 1:1 to 1:4. They are exclusively pre-profiled to the customer's specifications and/or according to suggestions made by the architect.

Cassette cladding allows a great deal of flexibility concerning formats, the layout of joints and fixing principles. Folded edges on every side allow even larger sheet metal parts to lie even with the cladding surface.

Fixing is usually achieved by riveting, screwing, hidden/subsurface fittings or by means of bolt hooks to fix the cassettes directly to the substrate.



# TECU® Rainwater Systems

TECU® roofing and cladding systems can be supplemented by rainwater system components from Fricke GmbH & Co. of Greven, Germany.



Their product range includes

- eaves gutters, half-round (lengths of 3 – 6 m) or
- eaves gutters, box section (lengths of 2 or 3 m)
- gutter brackets
- downpipes
- rainwater pipe brackets
- standpipe
- accessories



# TECU® Sizes and Availability

## TECU® Sheets

### TECU® Classic

Format/Thickness	0.5	0.6	0.7	1.0	1.2	1.5	2.0
1000 x 2000		•	•	•		•	•
1000 x 3000		•	•	•		•	•
1250 x 2500		•	•	•		•	•

### TECU® Patina

Format/Thickness	0.5	0.6	0.7	1.0	1.2	1.5	2.0
600 x 2000			•				
600 x 3000			•				
670 x 2000		•	•				
670 x 3000		•	•				
800 x 3000			+				
1000 x 2000		•	•	+	+	+	
1000 x 3000		•	•	•	+	+	

Manually patinated longer sheets available on request

### TECU® Brass

Format/Thickness	0.5	0.6	0.7	1.0	1.2	1.5	2.0
670 x 2000			•				
670 x 3000			•				
1000 x 2000			•	•			
1000 x 3000			•	•			+

Burnishing by FRICKE GmbH & Co. KG available on request

### TECU® Bronze

Format/Thickness	0.5	0.6	0.7	1.0	1.2	1.5	2.0
670 x 2000			•	•		+	
670 x 3000			•	•		+	
1000 x 2000			•	•		+	
1000 x 3000			•	•		+	
1250 x 2500			+	+		+	

Burnishing by FRICKE GmbH & Co. KG available on request

### TECU® Gold

Format/Thickness	0.5	0.6	0.7	1.0	1.2	1.5	2.0
670 x 2000	+		•	•			
670 x 3000	+		•	•			
1000 x 2000			+	+			
1000 x 3000			+	+			

## TECU® Strips

### TECU® Classic

Width/Thickness	0.5	0.6	0.7	1.0	1.5
200		•	•		
250		•	•		
333		•	•		
400		•	•		
500		•	•		
600		•	•		
670		•	•		
800		•	•		
1000		•	•		
1220		•	•		
1250		•	•		

### TECU® Oxid

Width/Thickness	0.5	0.6	0.7	1.0	1.5
500		•	•		
600		•	•		
670		•	•		

### TECU® Zinn

Width/Thickness	0.5	0.6	0.7	1.0	1.5
500		+	+		
600		•	•		
670		•	•		

### TECU® Brass

Width/Thickness	0.5	0.6	0.7	1.0	1.5
670			+	+	
1000			+	+	

### TECU® Bronze

Width/Thickness	0.5	0.6	0.7	1.0	1.5
670			+	+	+
1000			+	+	+
1250			+	+	+

### TECU® Gold

Width/Thickness	0.5	0.6	0.7	1.0	1.5
1000	+		+	+	

• available  
+ on request

Other dimensions and availability available on request.  
Further information: Project Consulting, Tel. +49 541 321-2000  
All measurements in mm.

TECU® Net  
TECU® Bond

TECU® System Products

**TECU® Net (stretch levelled)**

Thickness	0.7	1.0
Format 1000 x 2000	•	•
Format 1000 x 3000	•	•
TECU® Net Classic	•	•

Other formats available on request

**TECU® Net (stretched)**

Thickness	1.2
Format	on request
TECU® Net Classic	+
TECU® Net Patina	+

**TECU® Net (perforated)**

Thickness	1.0
Format 1000 x 2000	
TECU® Net Classic	+
TECU® Net Patina	•
TECU® Net Brass	+

Thickness	1.0
Format max. 670 x 2000	
TECU® Net Bronze	+
TECU® Net Gold	+

Other formats available on request

**TECU® Bond**

Nominal thickness	4.0
Thickness of copper 0.3 on both surfaces (alternatively 0.5)	
Format 1000 x 3000	
TECU® Bond Classic	•
TECU® Bond Patina	+
TECU® Bond Brass	+
TECU® Bond Gold	+

**TECU® System Shingles**

	Format	600 x 430	600 x 600
		Rectangular	square
	TECU® Classic	•	•
	TECU® Oxid	•	•
	TECU® Patina	•	•
	TECU® Zinn	•	•
	TECU® Brass	+	+
	TECU® Bronze	+	+
	TECU® Gold	+	+

Manufacture and sale:  
FRICKE GmbH & Co. KG

**TECU® System Rhomboids**

	Format	518 x 830	518 x 758
		Sharp	Round
	TECU® Classic	•	•
	TECU® Oxid	•	•
	TECU® Patina	•	•
	TECU® Zinn	•	•
	TECU® Brass	+	
	TECU® Bronze	+	+
	TECU® Gold	+	+

Manufacture and sale:  
FRICKE GmbH & Co. KG

**TECU® Façade Tiles**

	Format	200 x 200
	TECU® Classic	•
	TECU® Gold	+

Manufacture and sale:  
FRICKE GmbH & Co. KG

**TECU® Panels**

Lengths up to 4000, Widths up to 400		
	TECU® Classic	•
	TECU® Oxid	•
	TECU® Patina <sup>1</sup>	•
	TECU® Zinn	•
	TECU® Brass	•
	TECU® Bronze	•
	TECU® Gold	•

<sup>1</sup> Lengths up to 3000  
Manufacture and sale:  
FRICKE GmbH & Co. KG

**TECU® Cassettes**

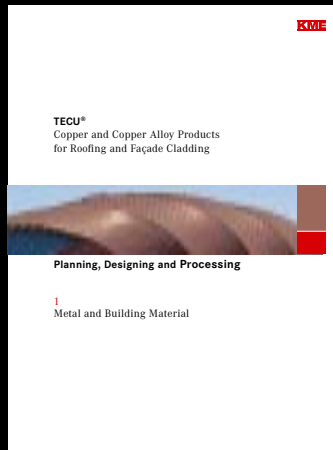
Custom manufacturing		
	TECU® Classic	•
	TECU® Oxid	•
	TECU® Patina	•
	TECU® Zinn	•
	TECU® Brass	•
	TECU® Bronze	•
	TECU® Gold	•

Manufacture and sale:  
FRICKE GmbH & Co. KG

**TECU® Profiled sheets**

Corrugated and trapezoidal profiles		
Formats available on request		
	TECU® Classic	+
	TECU® Oxid	+
	TECU® Patina	+
	TECU® Zinn	+
	TECU® Brass	+
	TECU® Bronze	+
	TECU® Gold	+

Manufacture and sale:  
FRICKE GmbH & Co. KG



## Service

TECU® products from KME are made to meet the demands placed on them by all kinds of different constructions. Many of their recognized, quality features are a result of close communication with expert customers in the building industry.

TECU® stands for a combination of high quality and complete service. As the world's leading processor and refiner of copper and copper alloy products, KME provides its technical advisory service to developers, architects, clients and roofers throughout Europe and beyond.

Information and consultation provided by TECU® Project Consulting ensure skilful use of materials, and make possible the realisation of perfect and aesthetically demanding solutions with TECU® products. The reference publication *TECU® - Planning, Designing and Processing*, is a rich source of detailed information – now available in five languages.



### Seminars and training courses

For everyday work in an architect's office, practical knowledge about the professional use of high-quality TECU® products is just as valuable as having reliable information about legal and organisational issues or new technologies. KME invites anyone with an interest in these issues to take part in special seminars for architects, which are held regularly in the **KMEForum** in Osnabrück.

The aesthetic and economic superiority of TECU® products is fully exploited when the material is used in a qualified manner in accordance with technical requirements. KME's TECU® Training Centre in Osnabrück offers multi-level professional seminars in which theoretical and practical processing techniques are taught at various levels of difficulty. Students apply their skills in practical work on models. The training events take place in the new **KMEForum** in Osnabrück, which is fully equipped with all modern training facilities, and offers a practice-oriented setting.

Courses are offered throughout Europe in collaboration with trade organisations and associations. This service is part of TECU® quality offered by KME.



TECU® Classic

TECU® Classic



**De Young Memorial Museum, San Francisco, USA**  
Herzog & de Meuron Architekten, Basel, CH  
*A. Zahner Co. Architectural Metals, Kansas City*  
TECU® Classic



**Harbour Control Tower, Lisbon, P**  
Gonçalo Byrne, G.B. Arquitectos, Lisbon  
*Zn-Revestimentos de Zinco Lda., Maia*  
TECU® Classic



**Service Centre Theresienwiese, Munich, D**  
Volker Staab Architekten, Berlin  
*Regensburger Metallbau, Regensburg*  
TECU® Classic



**THE CORE, Information Centre for the Eden Project, Cornwall, GB**  
Nicholas Grimshaw & Partners, London  
*Richardson Roofing Co. Ltd., Staines*  
TECU® Classic



**Poppodium Mezz, Breda, NL**  
(EEA) Erick van Egeraat associated architects, Rotterdam  
*SV Metaaldak Specialist BV, Beek en Donk / Brouwers Zink BV, Maasmechelen*  
TECU® Classic



**ESA - École Supérieure d'Art, Clermont-Ferrand, F**  
Architecture Studio, Paris  
*Raimond SA, Saint-Julien de Condelles*  
TECU® Classic



**Offices and industrial building, Koblach, A**  
AIX Architects, Feldkirch  
*Peter GesMBH + CoKG, Koblach*  
TECU® Classic



**Private Residence, Madrid, E**  
Bernalte y León Asociados, Ciudad Real  
*METAZINCO®, Madrid/Olloniego (Asturias)*  
TECU® Classic



**Officer's quarters of the Royal Marines of the Netherlands, Den Helder**  
Van Herk & de Kleijn Architecten BV, Amsterdam  
*Ridder BV, Hoorn*  
TECU® Classic



**Kulturhus De Bijenkorf, Borne, NL**  
MAS architectuur BV, Hengelo  
*Dakcentrum+, Beilen*  
TECU® Classic



**Casa Travella, Castel San Pietro, CH**  
Aldo Celoria, Balerna  
*Antonio Corti SA, Caslano*  
TECU® Classic



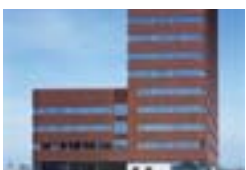
**Cultural Center, Chateau-Rouge, Annemasse, F**  
Cabinet R. Plottier, Lyon  
*Ets. Fourquet, Perouges*  
TECU® Classic



**Fitness Center, Sesto Fiorentino, I**  
Studio architetto Fabio Capanni, Florence  
*Idroflorence S.r.l., Badia a Settimo Scandicci (FL)*  
TECU® Classic



**Harbour Terminal, Barcelona, E**  
Grupo JG, Barcelona / BEA International, Miami (Florida), USA  
*METAZINCO®, Madrid/Olloniego (Asturias)*  
TECU® Classic



**PSG Copper Tower Nordre, Copenhagen, DK**  
Arkitema K/S, Copenhagen  
*NCC Construction A/S, Hellerup*  
TECU® Classic

**Object**  
Architects  
Copper Contractor  
Cladding



TECU® Patina

TECU® Patina



**Galway-Mayo Institute of Technology, Galway, IRL**  
Murray O'Laoire Architects, Cork  
*Let it Rain Roofing Ltd., Galway*  
TECU® Patina



**Villa ArenA (Restaurant), Amsterdam, NL**  
Virgile & Stone Associates Ltd., London  
in cooperation with Benthem Crouwel Architecten  
*Leebo bouwsystemen BV, Drunen*  
TECU® Patina



**Maggie's Highlands Cancer Caring Centre at Raigmore Hospital, Inverness, GB**  
Page & Park Architects, Glasgow  
*W B Watson Ltd., Stewarton*  
TECU® Patina, TECU® Oxid



**Peckham Library, London, GB**  
Alsop & Störmer, London  
*Cleveco, Enfield*  
TECU® Patina



**Pilgrimage Church Padre Pio, San Giovanni Rotondo, I**  
Renzo Piano Building Workshop, Genoa  
*WAL S.r.l., Bregnano (CO)*  
TECU® Patina



**Centro Stampa Quotidiani, Brescia, I**  
TECNE S.r.l., Brescia  
*Santinato, Castiglione delle Stiviere (MN)*  
TECU® Patina



**Entrance to University Library, Debrecen, H**  
János Golda, János Megyik, Gábor Szenderffy, Budapest  
*Szolnok KAS Kft, Szolnok*  
TECU® Patina



**"Boscotondo", Helmond, NL**  
Adolfo Natalini Architetti, Florence  
Architectenburo C. Schrauwen, Amsterdam  
*Crombach Dakafwerking BV, Wittem*  
TECU® Patina



**Office and shop building "KAI 13", Düsseldorf, D**  
Döring Dahmen Joeressen Architekten, Düsseldorf  
*Zitzen GmbH, Mönchengladbach*  
TECU® Patina



**"Thunderbird" House, Poole, GB**  
Seven Developments Ltd., Poole  
*Pace Roofing Ltd., Romsey*  
TECU® Patina



**Bank of Friesland, Leeuwarden, NL**  
Van Tilburg Ibelings von Behr architecten, Capelle a/d IJssel  
*Hankel's Wommels in cooperation with C.J. Ockeloen VOF, Amsterdam*  
TECU® Patina



**Underground station Hounslow West, London, GB**  
Michael Watkins (Partner), London, (Acanthus, Lawrence and Wrightson Architects)  
*Broderick Structures Ltd., Woking*  
TECU® Patina



**Residential building, Purmerend, NL**  
Roy Gelders Architecten, Amsterdam  
*Ridder Dak- en Wandsystemen BV, Hoorn*  
TECU® Patina



**Private Residence, NL**  
Charles Slot Bureau Ruimtelijke Vormgeving, Bergen  
*PBK Technische Installaties BV, Alkmaar*  
TECU® Patina



**Yefei's Creative Street, Shanghai, VRC**  
Alsop, London, GB;  
U/Jiang Architects & Engineers, Shanghai  
*Hanchang Industrial Development Co., Shanghai*  
TECU® Patina, TECU® Oxid, TECU® Bronze



**Orto Botanico, Lago Cavazzo, Interneppo (UD), I**  
Alberto Antonelli, Gemona del Friuli (UD)  
*Alberto de Cecco, Osoppo, (UD)*  
TECU® Patina

## TECU® Oxid



**Production and office building, Baar, CH**  
Burkart, City of Baar Building Department Baar;  
Barkow Leibinger Architekten, Berlin  
*Gebr. Baur AG, Baar*  
TECU® Oxid



**Forum, Amsterdam, NL**  
Atelier PRO, The Hague  
*C.J. Ockeloen VOF, Amsterdam*  
TECU® Oxid



**Ferryman's House, Fæne Gods, Middelfart, DK**  
Schmidt, Hammer & Lassen A/S, Aarhus  
*Eddie Clement A/S, Ejby*  
TECU® Oxid



**Roche Forum, Buonas, CH**  
Scheitlin + Syfrig, Luzern  
*Gebr. Baur AG, Baar*  
TECU® Oxid



**University Stuttgart, Stuttgart, D**  
Rolf Loew, Stuttgart  
*Dangel GmbH, Lenningen*  
TECU® Oxid



**Motorway Toll Collection Area, Lucca, I**  
Ettore Piras Architetto, Genova  
*Trenkwald S.r.l., Ovada (AL)*  
TECU® Oxid



**Production and office building of Elektro Graf, Dornbirn, A**  
Baumschlager & Eberle, Lochau  
*Güther GmbH, Feuchtwangen, D*  
TECU® Oxid



**Parque de la Relajación, Torre Vieja, E**  
Toyo Ito & Associates, Tokyo, J;  
Toyo Ito Spain & Associates, Alicante, E  
*Vicente Escolano, Novelda, Alicante*  
TECU® Classic

## TECU® Zinn



**VCNON Traffic control centre, Wolfheze, NL**  
De Architecten Cie, Amsterdam  
*Verkoelen Dakbedekkingen BV, Beegden*  
TECU® Zinn



**Private Residence, Herrliberg, CH**  
R. Baenziger, Zurich  
*Hersperger, Meilen (Façades);  
Studer AG, Volketswil (Plumbing)*  
TECU® Zinn



**St. Mary of the Angels, Rotterdam, NL**  
Mecanoo architecten, Delft  
*Leidekkersbedrijf Jobse BV, Middelburg*  
TECU® Zinn



**Administrative building of WeberHaus, Rheinau/Linx, D**  
Dipl.-Ing. Günter Hermann, Stuttgart  
*Wittenauer GmbH, Sasbach*  
TECU® Zinn



**Haus am Fluss (House by the river), DGF Stoess AG, Eberbach/Neckar, D**  
Dipl.-Ing. Günter Hermann, Stuttgart  
*Güther GmbH, Feuchtwangen*  
TECU® Zinn



**Japan Restaurant "My Sushi", Milano, I**  
Studio di Architettura Clerici, Gallizia Tutucci, Milano  
*Copermont S.r.l., Clusone (BG)*  
TECU® Zinn

**Object**  
Architects  
Copper Contractor  
Cladding

TECU® Brass  
TECU® Bronze  
TECU® Gold

TECU® Net  
TECU® Bond



**Chiesa di San Giacomo, Laives (BZ), I**  
Höller & Klotzner Architetti, Merano (BZ)  
*MetallRitten S.r.l., Collalbo (BZ)*  
TECU® Brass



**UEC – Urban Entertainment Centre, Almere, NL**  
Will Alsop Architects, London  
*Ridder Dak- en Wandsystemen BV, Hoorn*  
TECU® Brass



**Cimitero Trescore, I**  
Ing. Augusto Zambelli, Trescore Balneario (BG);  
Arch. Basilia Barcella, Bergamo  
*EFFEGI Costruzioni S.r.l., Castelli Calepio (BG)*  
TECU® Bronze



**Koningshof, Maassluis, NL**  
Hans Goverde, Kraaijvanger Urbis, Rotterdam  
*MSH Installatie- en Dakdekkersbedrijf BV, Schiedam*  
TECU® Gold



**Haus Metzner, Residential and Care Centre for the Aged, Cremlingen-Gardessen, D**  
Jörg Baumeister, m3xh, Braunschweig  
*Musche GmbH, Magdeburg*  
TECU® Gold



**Residential Building Grazbachgasse, Graz, A**  
INNOCAD Planung und Projektmanagement GmbH, Graz  
*Steinbauer, Judenburg*  
TECU® Gold



**Office building of the International Ice Hockey Federation, Zurich, CH**  
Tilla Theus und Partner AG, Zurich  
*Scherrer Söhne AG, Zurich*  
TECU® Net Classic



**InnovationsCampus, Wolfsburg AG, Wolfsburg, D**  
O.M. Architekten BDA, Braunschweig  
*Bisping GmbH & Co., Münster*  
TECU® Net Patina



**BTV Bank, Innsbruck, A**  
Hanno Vogl-Fernheim, Innsbruck  
*Spenglerei & Glaserei Anker, Hall*  
TECU® Net Bronze



**Private Residence, Affoltern am Albis, CH**  
Deon AG, Luzern  
*W.O.B. GmbH, Wolfenschiessen*  
TECU® Net Classic



**Residential Building "Le Galilée", Rennes, F**  
Chouzenoux et Associés, Rennes  
*SABM, Guichen*  
TECU® Net Classic



**Private Residence, Nuremberg, D**  
Haid+Partner Architekten+Ingenieure, Nuremberg  
*Schlosserei Spenglerei Straßl, Arnstorf*  
TECU® Bond

**KME Germany GmbH & Co. KG**

*Architectural Solutions*  
Postfach 33 20  
49023 OSNABRÜCK  
Klosterstraße 29  
49074 OSNABRÜCK  
GERMANY  
Fon +49 (0)541 321-2000  
Fax +49 (0)541 321-2111  
www.kme.com  
info-tecu@kme.com

**KME Italy S.p.A.**

*Architectural Solutions*  
Via Morimondo, 26  
Ex Richard Ginori Ed. 01 Int. A5  
20143 MILANO  
ITALY  
Fon +39 02 8914021  
Fax +39 02 89140281  
www.kme.com  
info-tecu-italy@kme.com

**KME France S.A.S.**

*Architectural Solutions*  
11 bis, rue de l'Hôtel de Ville  
92411 COURBEVOIE CEDEX  
FRANCE  
Fon +33 (0)1 47896-849  
Fax +33 (0)1 47896-932  
www.kme.com  
info-tecu-france@kme.com

**KME Spain S.A.**

*Architectural Solutions*  
Ctra. de Sabadell B -140, km5  
Sta. Perpétua de Mogoda  
08130 BARCELONA  
SPAIN  
Fon +34 93 5747090  
Fax +34 93 5747091  
www.kme.com  
info-iberica@kme.com

**KME Yorkshire Limited**

*Architectural Solutions*  
Severn House, Prescott Drive  
Warndon Business Park  
WORCESTER  
WR4 9NE  
UNITED KINGDOM  
Fon +44 (0) 1905 751800  
Fax +44 (0) 1905 751801  
www.kme.com  
info-yct@kme.com

**FRICKE GmbH**

Eichendorffweg 10  
48268 GREVEN  
GERMANY  
Fon +49 (0)2575 309-0  
Fax +49 (0)2575 309-25  
www.kme.com  
info-fricke@kme.com

**KME America Inc.**

1000 Jorie Boulevard, Suite 111  
OAK BROOK, Illinois 60523  
USA  
Fon +1 (0)630 990-2025  
Fax +1 (0)630 990-0258  
www.kme.com  
info-america@kme.com

**KME India PVT. LTD**

2B, Dyavasandra Industrial Area,  
4th Cross, Whitefield Cross Road  
BANGALORE-560048  
INDIA  
Fon +91 96 63 31 47 54  
Fax +91 80 43 58 03 31  
info-india@kme.com

**KME Metals (Shanghai) Trading Ltd.**

Hong Qiao Road 808, Rm. 8612  
200030 Shanghai  
P.R.C.  
CHINA  
Fon +86 21 64478680  
Fax +86 21 64478679  
www.kme.com.cn  
info-china@kme.com

**KME Benelux BVBA**

Multiburo  
Culliganlaan 1B  
1831 DIEGEM  
BELGIUM  
Fon +32 (0) 2 403 11 73  
Fax +32 (0) 2 403 11 69  
www.kme.com  
info-benelux@kme.com

**Architectural Solutions**

**Austria**  
Fon +43 (0) 699 13 62 91 79  
Fax +43 (0) 1 33 40 160  
info-austria@kme.com

**Architectural Solutions**

**Netherlands**  
Fon +31 (0) 6 53 74 38 92  
Fon +31 (0) 78 621 29 91  
info-nl@kme.com

**Architectural Solutions**

**Russia**  
Fon +7 812 232 4042  
Fax +7 12 753 4372  
info-ru@kme.com

**KME Danmark A/S**

Næsbyvej 26  
5000 ODENSE C  
DENMARK  
Fon +45 65 916410  
Fax +45 65 916411  
www.kme.com  
info-dk@kme.com

**Sweden:**

KME Danmark A/S, Sweden  
Box 118  
64723 MARIEFRED  
SWEDEN  
Fon +46 15 910612  
Fax +46 15 910613  
www.kme.com  
info-s@kme.com

**KME Polska Sp. z o.o.**

ul. Wszystkich Swietych 11  
32-650 KETY  
POLAND  
Fon +48 (0)33 841 09 95  
Fax +48 (0)33 845 19 54  
www.kme.com  
info-polska@kme.com

**KME (Suisse) SA**

Binzallee 22  
8055 ZURICH  
SWITZERLAND  
Fon +41 (0)43 3882000  
Fax +41 (0)43 3882001  
www.kme.com  
info-ch@kme.com

**Architectural Solutions**

**Romania**  
Fon +4 0314 148 449  
Fax +4 0314 148 449  
info-ro@kme.com

**Architectural Solutions**

**Czech Republic**  
Fon +420 602 38 99 27  
Fax +420 312 68 03 34  
info-cz@kme.com

**Architectural Solutions**

**Hungary**  
Fon +36 0704243033  
Fax +36 056421657  
info-hu@kme.com

**Architectural Solutions**

**South East Asia**  
Fon +65 63 37 86 71  
Fax +65 67 48 22 34  
info-sg@kme.com



Institut Bauen  
und Umwelt e.V.

® = registered trademark

All changes reserved.  
Owing to limitations in printing technology, the colours reproduced in this brochure should be regarded as approximate equivalents to the colours described.

1113.040.0508