



*Private residence, Melbourne, Australia.
Architect: Jesse Judd.*

Aesthetic finishes

www.elzinc.es

elZinc
Designing with elZinc®



Private residence, Melbourne, Australia.
Architect: Jesse Judd.



As a manufacturer of rolled zinc, we have developed a wide range of surface finishes for architectural metal cladding.

Present in more than 35 countries, we also offer our technical support to the professionals that may request it all over the world.



elZinc Alkimi

Pure elegance

Zinc cladding and roofing allows a great deal of freedom when designing. The **elZinc Alkimi** aesthetic finishes give character and authenticity to your architectural projects.

Manufactured from elZinc Natural, according to EN988 and ASTM B-69 standards, through a unique surface treatment carried out with elZinc technology and know-how, the **elZinc Alkimi** range respects and maintains intact the zinc's original properties.

Zinc cladding and roofing contributes to create a unique style and confers undeniable aesthetic value to buildings.

Used alone or combined, the shades that compose **elZinc Alkimi** - currently the widest on the market - reveal the shapes, the volumes and the textures of architecture.



football Stadium, Dallas, USA.
Architect: O'Brien Architects.



Itep La Forge, Wintzenheim, France.
Architect: D-Form.

elZinc Natural®

A timeless classic

elZinc® Natural is original titanium zinc fresh from the rolling mill. Exhibiting all the qualities of a naturally weathering metal, **elZinc® Natural** starts its life showing a metallic silver colour. The natural patina, which develops

automatically on exposure to the weather, turns the finish to a pleasant matt grey colour. It also provides a self-healing protective layer giving it exceptional resistance against corrosion.

Collège Jean Villar, Plaisir, France.
Architecte: SCP Fournier Bathelier.



elZinc Graphite®

A touch of elegance

elZinc Graphite® is architectural zinc pre-weathered to a very dark, almost black, shade of grey. Bringing to the fore the cladding's lines in a refined fashion, it is appreciated for its purity and sobriety.

Combined with other materials such as wood or glass, it allows the creation of stylish and long-lasting facades which maintain their original elegance as time passes by.



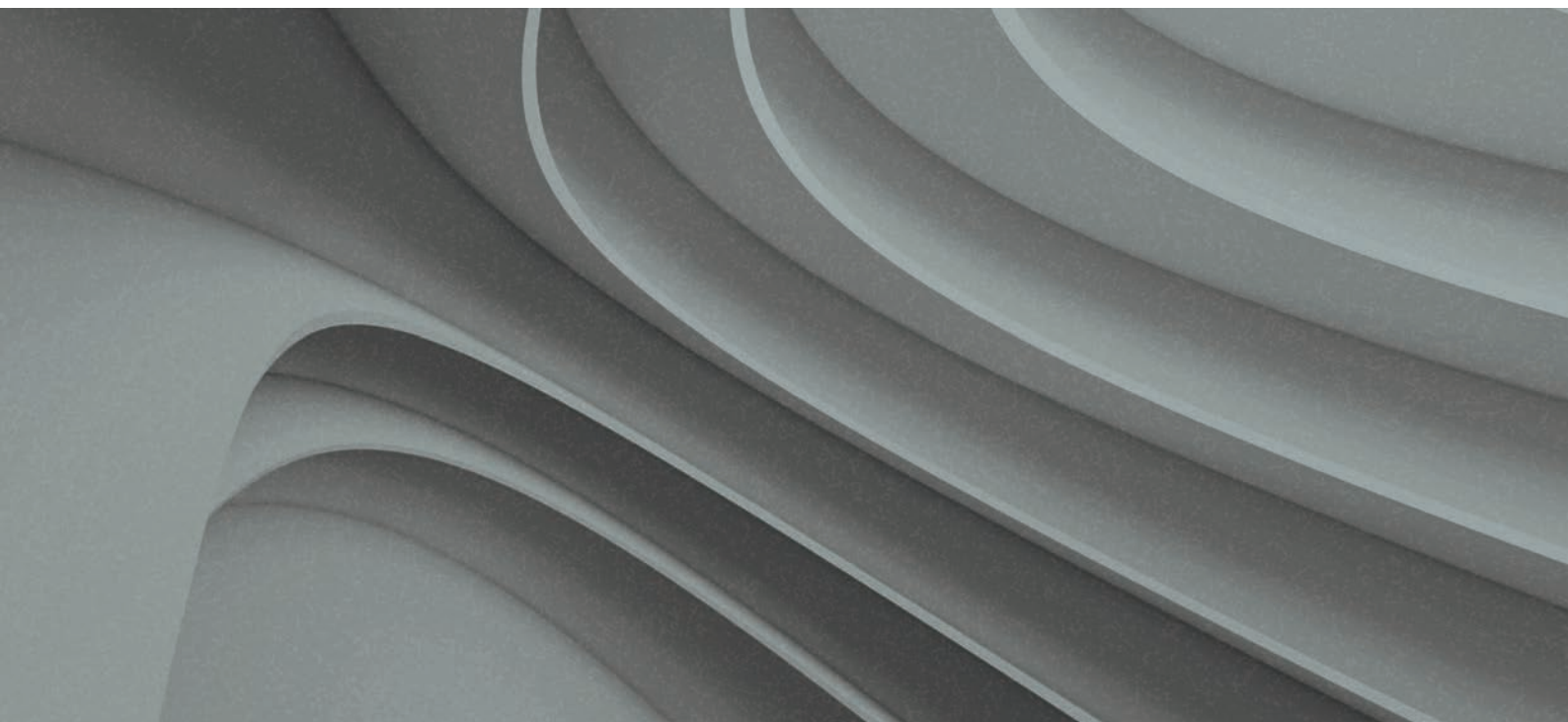
Individual development, Australia.

**elZinc
Slate®**

Everlasting beauty

elZinc Slate® is a pre-patinated matt grey zinc having a very similar appearance to naturally weathered zinc. It is used in roofing and cladding, where it harmonizes perfectly with other building materials, or indeed indoors,

where a natural patina would take much longer to form. **elZinc Slate®** is also used in restoration and renovation since its colour allows it to blend in easily with existing weathered zinc.



**elZinc
Lava®**

A metal with character

elZinc Lava® is a basalt grey pre-weathered zinc. Its colour sits perfectly amongst the other finishes in the elZinc range and thus allows a greyscale gradient design that can add

dynamism to façades in a strikingly unique way. Resistant and good looking, **elZinc Lava®** can be incorporated into both contemporary and traditional architecture.



A natural tendency

elZinc Oliva® is a dark grey pre-weathered zinc with subtle greenish and bluish hues. These contemporary tones guarantee a natural and balanced contrast with the surrounding environment.

Subtle and sophisticated, **elZinc Oliva®** enhances any building's appearance with unique and personalized aesthetics.



Changing reflections

Pearl grey pre-patinated zinc, **elZinc Crystal®** creates striking effects that personalize your façades. Its changing reflections play with light and give it a different look depending on its exposure.

Modern yet timeless, **elZinc Crystal®** helps you to bring a unique touch to your architecture.

elZinc Rainbow®

A new palette of colours

Colour is an essential component of architecture which forms an integral part of the building identity. Versatile and aesthetic, zinc doesn't have to be grey.

elZinc Rainbow® is a range of colored architectural zinc which combines zinc elegance with the richness of colours. Available in 6 standard attractive finishes – red, blue, green, black, gold and brown – **elZinc Rainbow®** harmoniously integrates into its surroundings.

Produced according to EN988 and ASTM B-69 standards, **elZinc Rainbow®** is made by applying mineral pigments to **elZinc Slate®** (except in the gold finish). Its organic coating is a very attractive and durable finish that provides additional protection against corrosion.

elZinc has also developed a process* which allows it to offer custom colours. Don't hesitate to ask about personalized finishes.

The shimmering, iridescent effects of **elZinc Rainbow®** combine modernity and tradition, to be enjoyed by all. Its subtle, versatile shades are suitable for all types of architecture, opening up exciting opportunities for designers.

* conditions apply.



UEA Blackdale Student Residence development, Uk
Architect: LSI Architects.



*The Alchemist restaurant, Manchester, UK.
Architect: Reid Architects.*

elZinc Rainbow® Gold



*Rubey Park Transit Center, Aspen, USA.
Architect: Studio B Architecture.*

elZinc Rainbow® Green



Convention center, Adelaide, Australia
Architect: Woods Bagot.

elZinc Rainbow® Red



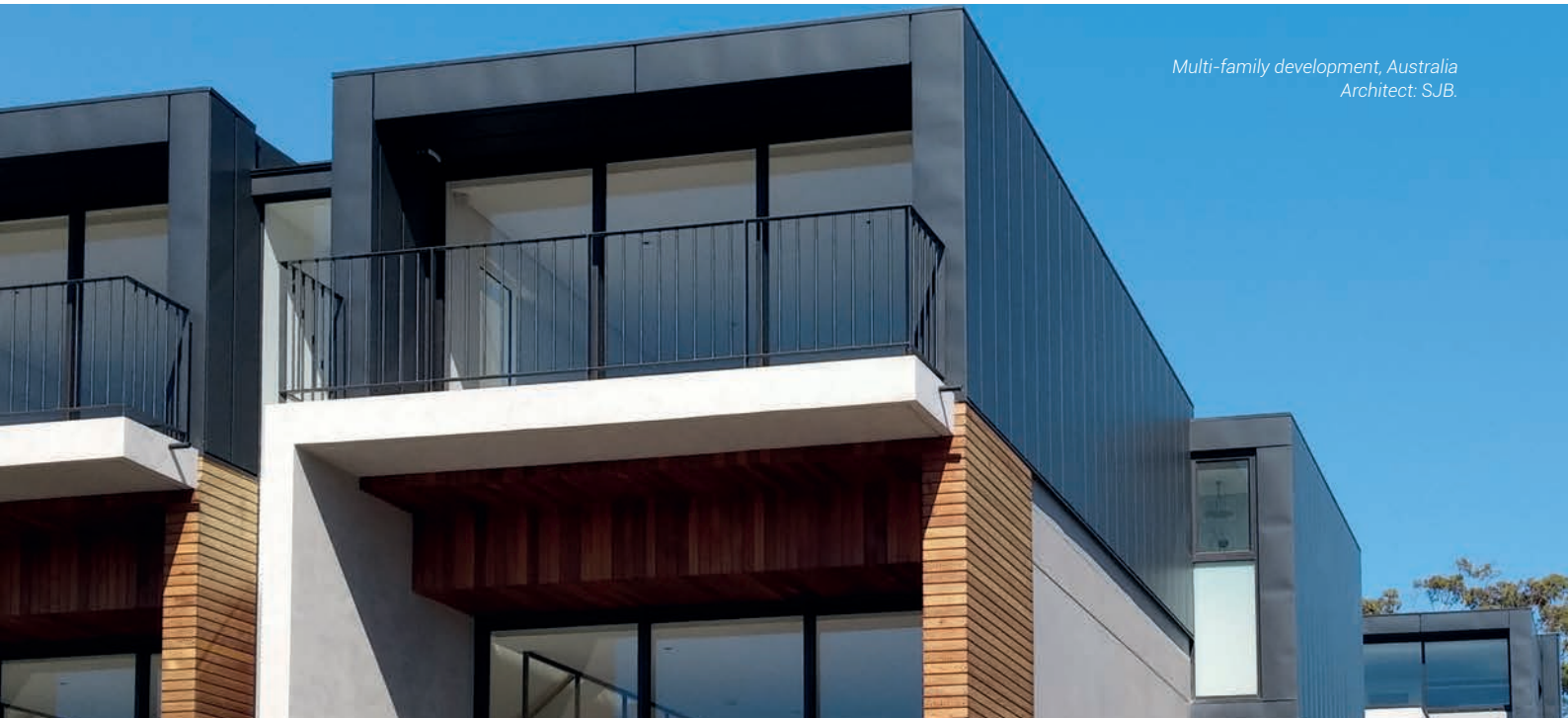
Chung Tai Chan Monastery, Taiwan
Architect: The monks of the monastery.

elZinc Rainbow® Brown



School, Chirens, France
Architect: Arcane.

elZinc Rainbow® Blue



Multi-family development, Australia
Architect: SJB.

elZinc Rainbow® Ebony



FACTORY AND HEAD OFFICE

ASTURIANA DE LAMINADOS, S.A.
Pol. Ind. de Villallana, Parcela 1
33695 Pola de Lena – Spain

T (0034) 98 567 60 00 / 98 410 60 00

F (0034) 98 549 32 02 / 98 569 20 00
elzinc@aslazinc.com

www.elzinc.es