

# elZinc Rainbow®

## A new palette of colours

Colour is an essential component of architecture which forms an integral part of the building identity. Versatile and aesthetic, zinc doesn't have to be grey.

**elZinc Rainbow®** is a range of colored architectural zinc which combines zinc elegance with the richness of colours. Available in 6 standard attractive finishes – red, blue, green, black, gold and brown – **elZinc Rainbow®** harmoniously integrates into its surroundings.

Produced according to EN988 and ASTM B-69 standards, **elZinc Rainbow®** is made by applying mineral pigments to **elZinc Slate®** (except in the gold finish). Its organic coating is a very attractive and durable finish that provides additional protection against corrosion.

**elZinc has also developed a process\* which allows it to offer custom colours. Don't hesitate to ask about personalized finishes.**

The shimmering, iridescent effects of **elZinc Rainbow®** combine modernity and tradition, to be enjoyed by all. Its subtle, versatile shades are suitable for all types of architecture, opening up exciting opportunities for designers.

\* conditions apply.



UEA Blackdale Student Residence development, Uk  
Architect: LSI Architects.



elZinc Rainbow®

*The Alchemist restaurant, Manchester, UK.  
Architect: Reid Architects.*

elZinc Rainbow® Gold

*Rubey Park Transit Center, Aspen, USA.  
Architect: Studio B Architecture.*

elZinc Rainbow® Green





Convention center, Adelaide, Australia  
Architect: Woods Bagot.

elZinc Rainbow® Red



Chung Tai Chan Monastery, Taiwan  
Architect: The monks of the monastery.

elZinc Rainbow® Brown

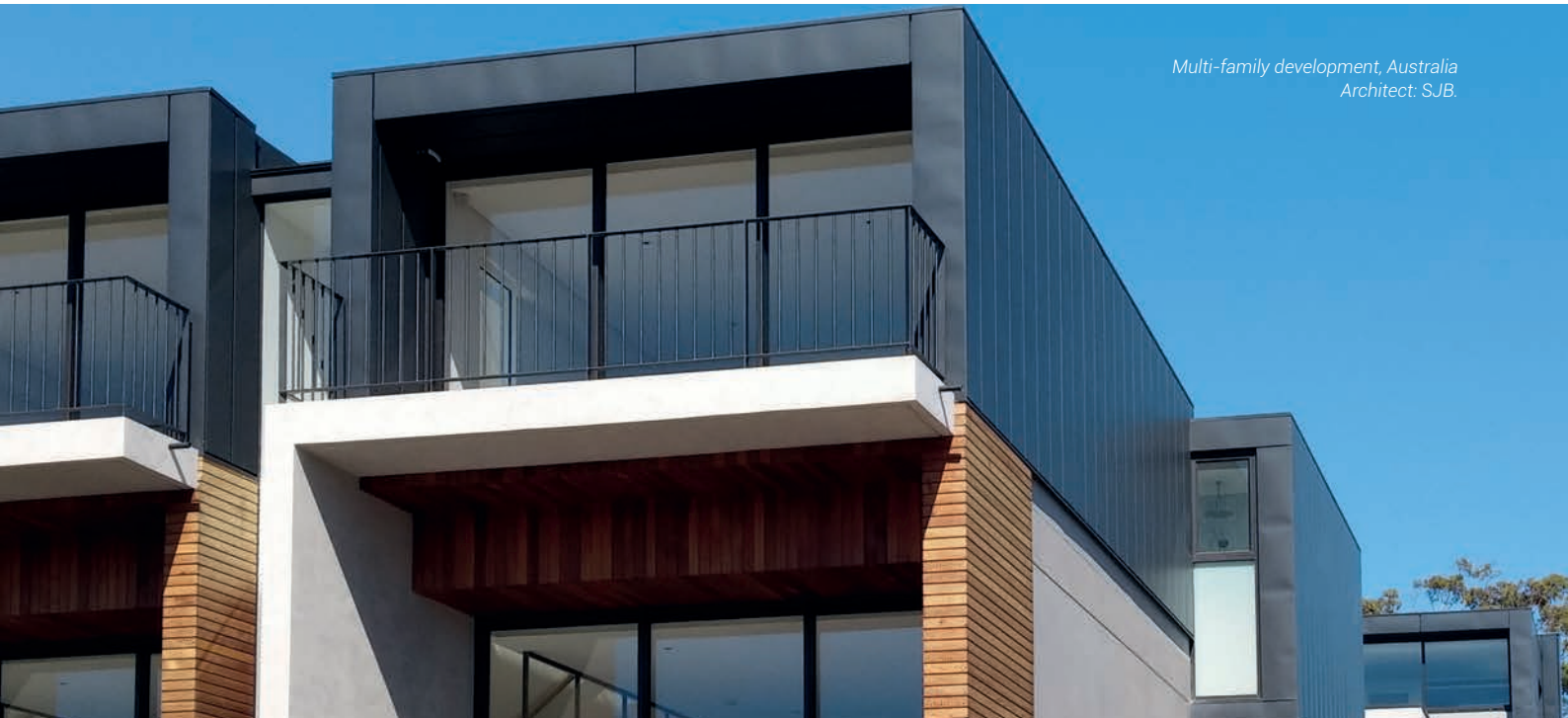


elZinc Rainbow®



School, Chirens, France  
Architect: Arcane.

elZinc Rainbow® Blue



Multi-family development, Australia  
Architect: SJB.

elZinc Rainbow® Ebony