



70

**YEARS
QUALITY**

since 1946



FAÇADE SYSTEMS

made from aluminium





COVER PHOTO
Product: PREFA FX.12 roof and façade panel
Colour: stone grey P.10
Location: La Grave (France)
Architect: Atelier 17 C – Architectes
Installed by: Altibois

04
THE PREFA SUCCESS STORY | FD.TEC | P.10



06
RHOMBOID FAÇADE TILE 44 × 44 **NEW!**



10
FAÇADE SHINGLE



14
FX.12 FAÇADE PANEL



18
SIDING



26
PREFALZ



30
ALUMINIUM COMPOSITE PANEL



40
EXTRUDED PROFILES AND CORRUGATED PROFILE

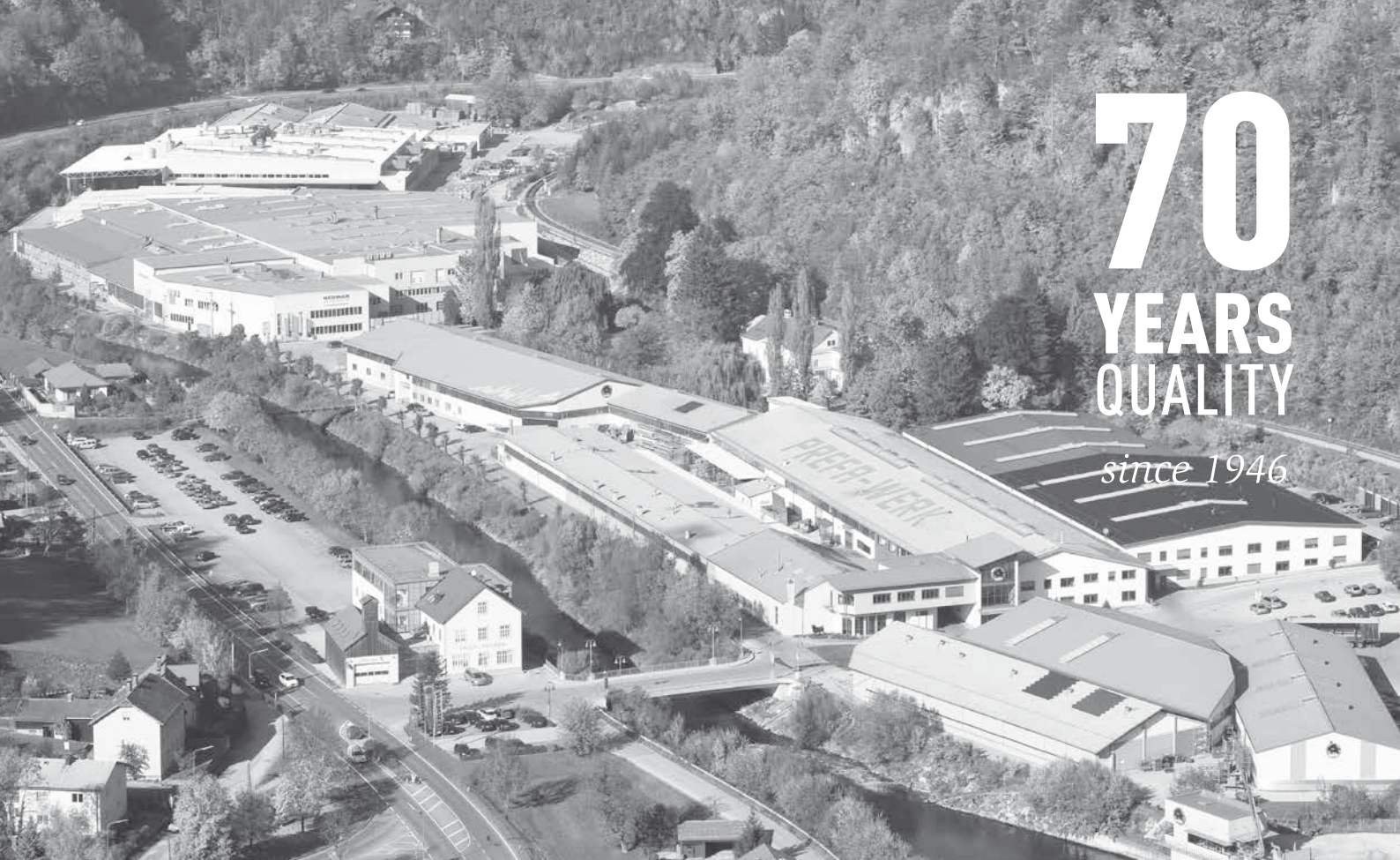


44
THE PREFA COLOUR RANGE

46
THE PREFA PRODUCT OVERVIEW

70 YEARS QUALITY

since 1946



FD.TEC FREQUENCY
DAMPER STRIPS

PREFA R.16 ROOF TILE



FD.TEC TAKES THE MOMENTUM OUT OF SOUND

PREFA's unique FD.TEC frequency damper technology reduces unwanted frequency ranges to a minimum, and prevents certain sound emissions to a large extent. The purpose of the FD.TEC frequency damper strips attached to the back of all small format PREFA roof elements is to absorb frequencies that can be caused by rain and hail.

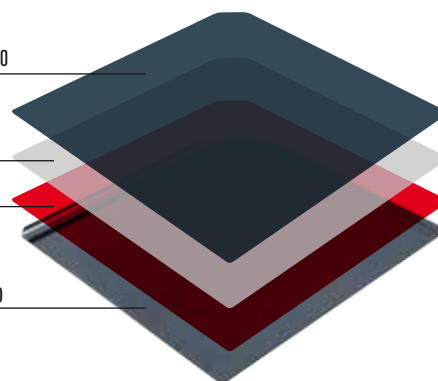


COATING
COIL COATING P.10

PRIMER

PRE-TREATMENT

PREFA RHOMBOID
ROOF TILE



P.10 COLOUR-FAST SURFACE

With PREFA P.10, we have developed a surface that meets even the highest quality standards. The PREFA P.10 surface coating is the ideal complement for many PREFA products. The result is a material which withstands external influences and stresses and at the same time is incredibly light and stable, offering a wide range of planning and design possibilities.



THE PREFA SUCCESS STORY

PREFA has been successfully developing, producing and marketing aluminium roof and façade systems in Europe for 70 years.

1946 DEVELOPMENT OF THE FIRST ALUMINIUM ROOF TILE

Gödl, the master metal worker and roofer from Salzburg, invents "PREFA", the aluminium roof tile

1955 START OF PRODUCTION IN MARKTL

The production of PREFA is taken over by the aluminium rolling plant, Fried. v. Neuman Zink- und Aluminiumwalzwerk

1978 DEVELOPMENT OF THE TWO-LAYER STOVE ENAMEL SURFACE

Market launch of the two-layer stove enamel finish and coated aluminium strips

1980 DEVELOPMENT OF THE SP80 SURFACE

PREFA introduces the pioneering SP80 coating system in anthracite, brown and dark green

1981 PREFA IS TAKEN OVER BY TUBEX

Fried. v. Neuman is taken over by the Tubex group under the management of Dr. Cornelius Grupp

1983 DEVELOPMENT OF SHINGLES AND SIDINGS

PREFA starts producing aluminium shingles and sidings

1998 WASUNGEN EXPANDS

6 years after the start of production, another factory is opened in Wasungen (Germany)

2001 "THE ROOF AS STRONG AS A BULL!"

From 2001, the PREFA brand is successfully characterised by its distinctive new logo and slogan

2004 EXPANSION OF EUROPEAN DISTRIBUTION

In 2004, PREFA sets up distribution companies in Italy, the Czech Republic, Hungary and Poland

2005 PREFA ACADEMY MARKTL

PREFA imparts a wealth of knowledge on products, technology, installation and much more at its training centre

2010 DEVELOPMENT OF THE P.10 SURFACE

The PREFA P.10 surface meets the highest architectural standards

2012 FX.12 ROOF AND FAÇADE PANEL

With its innovative FX.12 panel, PREFA offers the perfect combination of appearance and protection

2015 PREFA SQUARE DOWNPIPE

PREFA introduces a completely new architectural style for roof drainage

2016 R.16 ROOF TILE | RHOMBOID ROOF AND FAÇADE TILE 44 x 44

PREFA's innovative products combine all the aesthetics of larger formats with significantly optimised handling during installation.

Product: PREFA rhomboid roof and façade tile 44 × 44
Colour: oxide red P.10 | light grey P.10
Photo montage





RHOMBOID FAÇADE TILE 44 × 44

When small formats
unveil new dimensions ...



Creating surprising effects

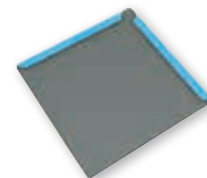
PREFA rhomboid façade tiles in the large 44 × 44 cm format add surprising touches to the tried and tested “scaly” appearance of buildings. The fascinating rhomboid shape creates a contemporarily-styled façade appearance which emphasizes the overall design and makes every building unique and full of character. The integrated fastening strips facilitate speedy and inexpensive installation of the façade elements.





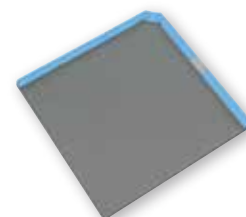
PREFA RHOMBOID FAÇADE TILE 20 × 20 — TECHNICAL DATA

Material	coated aluminium, 0.7 mm thick, two-layer stove-enamel finish or powder coating
Fastening	direct, using 1 PREFA ring nail per rhomboid façade tile 20 × 20 = 25 ring nails per m ²
Installation	on solid sheathing (at least 24 mm)
Size	200 × 200 mm (cover)
Weight	2.8 kg/m ²



PREFA RHOMBOID FAÇADE TILE 29 × 29 — TECHNICAL DATA

Material	coated aluminium, 0.7 mm thick, two-layer stove-enamel finish or powder coating
Fastening	1 tile clip per rhomboid façade tile 29 × 29 = 12 clips per m ²
Installation	on solid sheathing (at least 24 mm)
Size	290 × 290 mm (cover)
Weight	2.6 kg/m ²



PREFA RHOMBOID FAÇADE TILE 44 × 44 — TECHNICAL DATA

Material	coated aluminium, 0.7 mm thick, two-layer stove-enamel finish or powder coating
Fastening	direct, using 4 PREFA ring nails per rhomboid façade tile 44 × 44 = 20 ring nails per m ²
Installation	on solid sheathing (at least 24 mm)
Size	437 × 437 mm (cover)
Weight	2.6 kg/m ²



NEW!



FAÇADE SHINGLE

When perfection meets elegance

Product: PREFA façade shingle
Colour: anthracite P.10
Location: Kaltern (Italy)
Installed by: Demez Adam





Product: PREFA façade shingle
 Colour: metallic silver
 Location: Imst (Austria)
 Architect: Tabernig
 Installed by: Haid Nothdurfter

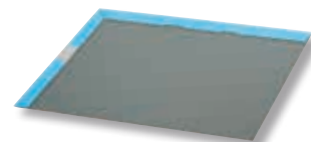


Surprisingly diverse possibilities in proven aesthetics

Small-format façade shingles are considered to be the popular classics of façade design. Thanks to their flexibility, small, narrow spaces can be realised in the same way as larger façades — and always with top technical quality, of course. Owing to their concealed fasteners, the small-format façade shingles also create an attractive appearance that meets even the highest expectations.

PREFA FAÇADE SHINGLE — TECHNICAL DATA

Material	coated aluminium, 0.7 mm thick, two-layer stove-enamel finish or powder coating
Fastening	1 PREFA patent clip per shingle = 10 clips per m ²
Installation	on solid sheathing (at least 24 mm)
Size	420 × 240 mm (cover)
Weight	2.5 kg/m ²



Product: PREFA FX.12 roof and façade panel
Colour: stone grey P.10
Location: La Grave (France)
Architect: Atelier 17 C – Architectes
Installed by: Altibois





FX.12 ROOF AND FAÇADE PANEL

The product turns
architectural visions into reality



FX.12: unique design, full of character

The FX.12 façade panel is an innovative and unique element which, with its lengthwise and right-angled canting, enables particularly futuristic surface designs to be created. This individual appearance, which differs depending on how the light falls on it, makes every building unique.

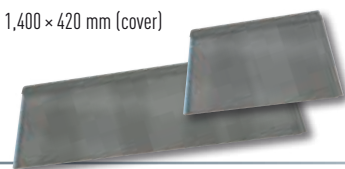
The two different format sizes and the asymmetrical appearance further accentuate the individual character of each building.

Product: PREFA FX.12 roof and façade panel
Colour: anthracite P.10
Location: Lipnice nad Sázavou (the Czech Republic)
Architect: František Čekal
Installed by: Střechy G&D sdružení živnostníků




PREFA FX.12 ROOF AND FAÇADE PANEL — TECHNICAL DATA

Material	coated aluminium, 0.7 mm thick, two-layer stove-enamel finish or powder coating according to RAL or NCS
Fastening	direct, using 3 PREFA ring nails 28/25 (small panel) or 5 PREFA ring nails 28/25 (large panel)
Installation	on solid sheathing or skip sheathing
Size	700 × 420 mm and 1,400 × 420 mm (cover)
Weight	2.4–2.5 kg/m ²



Product: PREFA FX.12 façade panel
Colour: light grey P.10
Location: Berlin (Germany)
Architect: Lusin Architektur
Installed by: Marco Riemelt Dachdecker GmbH





Product: PREFA siding
Colour: special colour
Location: Asti (Italy)
Architect: GAP Studio
Installed by: Lattneria Mauro Galavotti



SIDING

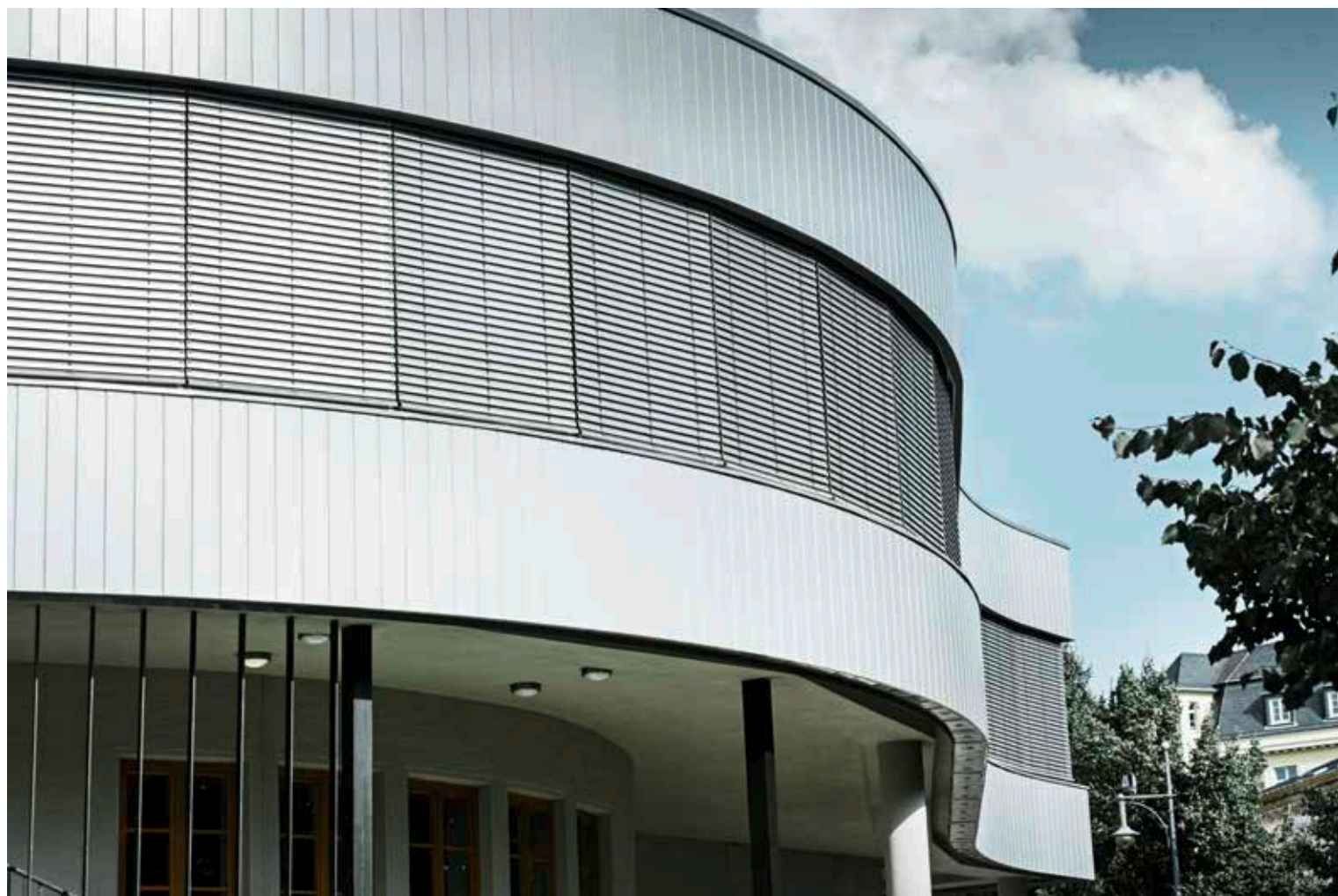
Pure aesthetics
across the full length and breadth



Product: PREFA siding | corrugated profile
Colour: metallic silver | smoke silver
Location: Hollabrunn (Austria)
Architect: Maurer & Partner
Installed by: Seyfried-Jecho

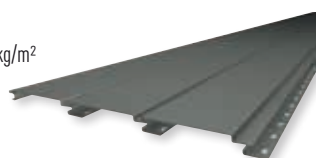
Intelligent solutions that convince right across the board

The PREFA façade siding gives your building a distinctive look and distinguishes itself with its outstanding constructive and functional characteristics.



PREFA SIDING — TECHNICAL DATA

Material	powder-coated aluminium alloy, smooth, stucco or lined surface with shadow gap option
Fastening	screwed to the aluminium or wood substructure
Coating	high-quality two-layer stove-enamel finish or powder coating
Standard formats	138 × 0.7 mm, 200 × 1.0 mm, 300 × 1.2 mm
length	500-6,200 mm
Weight	approx. 3.30 to 4.30 kg/m ²



Product: PREFA siding
Colour: metallic silver
Location: Halle (Germany)
Architect: Böllberger Planungsbüro
Installed by: Hotec Metallbau

Product: PREFA siding
Colour: metallic silver, matt anthracite
Location: Freistadt (Austria)
Architect: Peter Blineder (Gallneukirchen, Austria)
Installed by: Stadler roofers and metalworkers (Gallneukirchen, Austria)



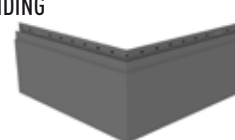
JOINT.138 | 200 | 300

1



CORNER SIDING

2



The “Joint.138|200|300” innovation is a special edge part which ensures a consistent gap when installing sidings (with or without a shadow gap). It can be installed independently of the substructure which ensures quick and flexible use. The new corner siding ensures a smooth transition at the corners and edges, giving the impression that the façade is cast in one piece.

Another new element is the lined surface structure which lends the façade a distinctive, elegant appearance.

Expressive and unique buildings, created from a wealth of diversity

Creative façade dreams can come true with PREFA sidings. The diverse design possibilities with variable visible widths (with and without shadow gaps), the smooth, stucco or lined surface finishes and the broad range of colours provide endless possibilities for

creating individual and long-lasting aluminium façade solutions. Whether for renovations or new builds, intelligent façade solutions are guaranteed with PREFA façade sidings.



Building-related special solution

The Gallneukirchen deaconry in Upper Austria decided to build a new factory canteen in 2012. The challenge facing the architects was to use the special topographical conditions to their advantage to create a coherent and functional building with a contemporary

appearance. So the building was built over two sites on different levels. The building structure itself features a range of inter-dependent protective roofs. Individual parts of the building protrude outwards forming a projecting roof over the floor below.

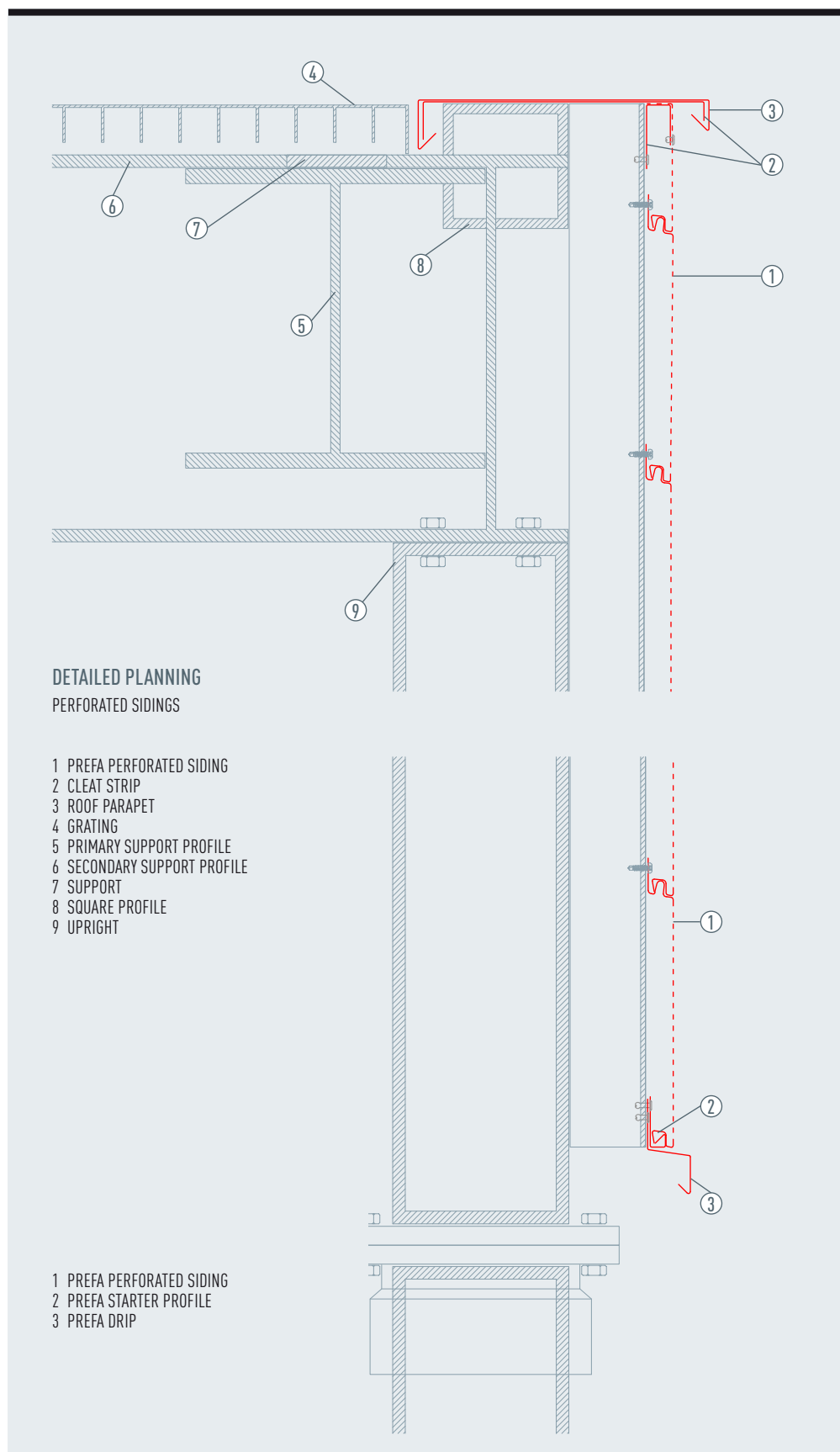
Product: PREFA perforated | non-perforated sidings
Colour: metallic silver
Location: Gallneukirchen (Austria)
Architect: Luger & Maul | Schröckenfuchs
Installed by: Märzinger metal workers and roofers



The building's supporting structure is made of reinforced concrete. A pre-fabricated support/beam/slab system meant that installation was quick and flexibility high. On the upper floors, the outer shell is made of PREFA sidings and in the yard area, of exposed concrete pre-cast elements in different thicknesses depending on the insulation requirements of the functions accommodated behind them. The outer material is layered slightly differently on each floor.

The basement is equipped with smooth, exposed concrete surfaces which give it a strong and sturdy base-like character. The kitchen level gives the impression of being a stronger horizontal, yet softer, structure through the arrangement of horizontal PREFA sidings in a standard metallic silver colour (similar to RAL 9006).

As the technical level was intended to give the same impression as the kitchen level, it was overlaid with perforated (Rv 5/8 = offset round perforations) PREFA sidings in the same shade. This screen, which surrounds the entire floor, also acts as a visual protection for the capacitors. The gleaming top floor has the lightest and most rugged appearance. Due to the particular location of the building, the flat roof level was also treated as a "fifth façade" and was also covered with perforated metal grating.





PREFALZ AND FALZONAL

Everything you can imagine is feasible!



Product: Falzonal
Colour: maya gold
Location: Olching (Germany)
Architect: Reinhard Maier-Trommeter
Installed by: Prens roofoers and metalworkers



Product: Prefalz
Colour: patina grey
Location: Vilvoorde (Belgium)
Architect: Eva de Wachter
Installed by: A&S Dakwerken





PREFALZ — TECHNICAL DATA

Material	coated aluminium, 0.7 mm thick, two-layer stove-enamel finish
Dimensions	0.7 × 500 mm (flashing strips: 0.7 × 650 mm; 0.7 × 1,000 mm)
Weight	approx. 1.89 kg/m ² (actual consumption with 500 mm strip: approx. 2.3 kg/m ²)
Installation	on solid sheathing (at least 24 mm)
Fastening	PREFA preformed fixed and sliding clips, according to static requirements



Product: Prefalz
 Colour: plain aluminium
 Location: Krems (Austria)
 Architect: Mang
 Installed by: Hintenberger Dächer- und Holzbau GmbH

Complex challenge — simple solution!

Prefalz comes in an impressive variety of colours and shapes. The reason for this is simple: as it is made of aluminium, Prefalz is more pliable than most comparable folding materials and therefore easy to shape. This results in countless individual design possibilities that would barely be conceivable with any other material. The material's flexibility does not affect its paint quality which means that the façade lasts a lifetime.

Product: PREFA aluminium composite panel
Colour: pure white
Location: Bad Tatzmannsdorf (Austria)
Architect: DI Gerald Prenner
Installed by: Grassel GmbH





COMPOSITE PANEL

Aesthetics take shape.
Any shape.



Product: PREFA aluminium composite panel
Colour: smoke silver, metallic silver, light grey
Location: Monthey (Switzerland)
Architect: Losinger Marazzi SA
Installed by: Rocpan SA



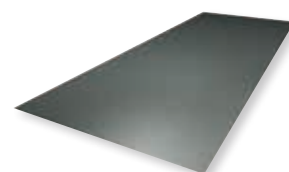
Product: PREFA aluminium composite panel
 Colour: special colour
 Location: Innsbruck (Austria)
 Architect: DIN-A4 Architektur
 Installed by: ARGE Metallbau Hörburger & Metallbau Platter

So you've got great plans? Then show them off!

Who says that size doesn't matter? Particularly on modern, large-scale constructions, PREFA aluminium composite panels are able to display all of their aesthetic qualities and beauty. Not only can the panels be screwed and riveted, they can also be glued. This makes for an elegant, uniform appearance even on large surfaces. The diverse colours and shapes, the chosen degree of gloss and the unusual design surfaces and special coatings are particularly enhanced on large façade areas.

PREFA ALUMINIUM COMPOSITE PANEL — TECHNICAL DATA

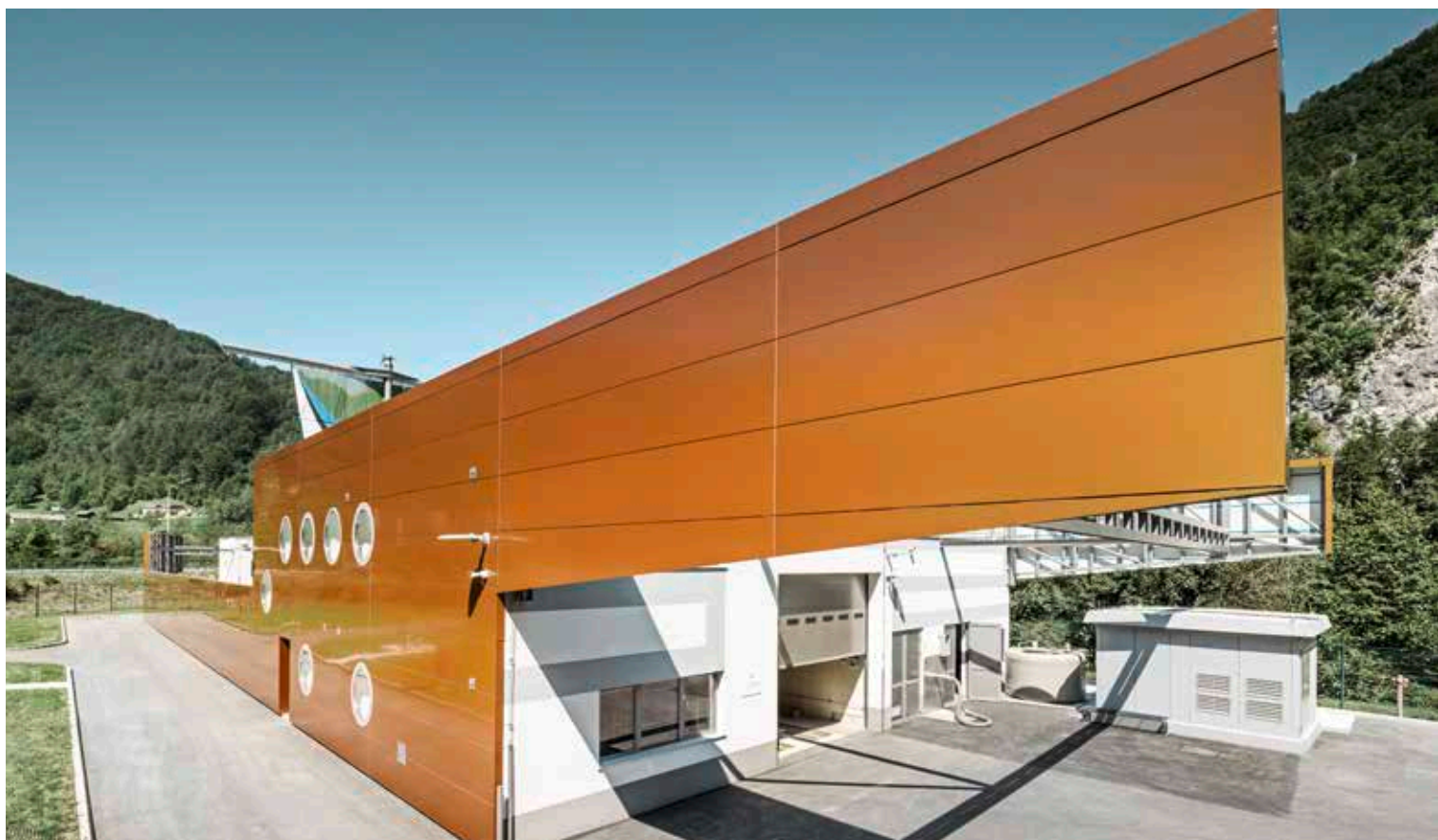
Material	1. coil-coated aluminium (front) 2. FR core (fire retardant) 3. coil-coated aluminium (rear)
Fastening	screwed, riveted or glued to the aluminium or wood substructure
Coating	high-quality two-layer stove-enamel finish; front: Duragloss 5000; rear: protective paint
Size	4,010 × 1,500 × 4,0 mm; other sizes, cuts and processing options (cutting, milling, drilling) possible
Weight	7.5 kg/m ²



Façades define your image!

A company's building is its biggest advertisement — and the more it is personalised, the more impressive it will be. The PREFA aluminium composite panel allows you to quite literally show your true colours and — thanks to the various processing options — to create a lasting impression before your visitors have even stepped foot inside the building. And PREFA's service is likely to impress you too — for instance, we offer particularly short delivery times even for small quantities, as well as expert advice throughout the entire project.





Product: PREFA aluminium composite panel
Colour: special colour
Location: Zagorje ob Savi (Slovenia)
Architect: AKA d.o.o.
Installed by: Deželak Janko s.p.



Even small surfaces can make a big impression

What would contemporary architecture be without PREFA aluminium composite panels? With their virtually limitless application possibilities and uniform appearance, they also enhance small areas intended to make a big impression.



Product: PREFA aluminium composite panel
Colour: special colour
Location: Zwettl (Austria)
Architect: Franz ZT GmbH
Installed by: Lagerhaus



Building-related special solution

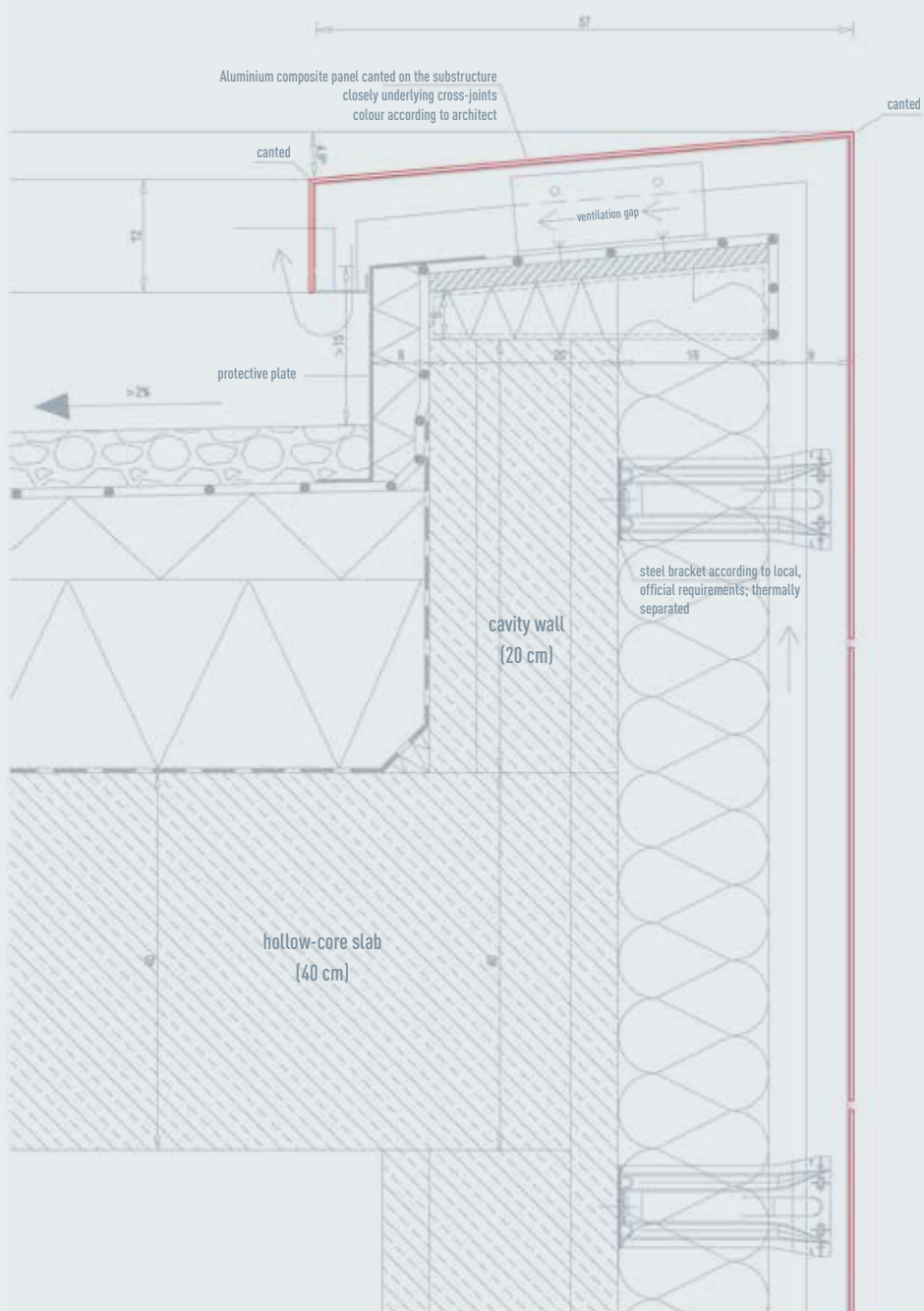
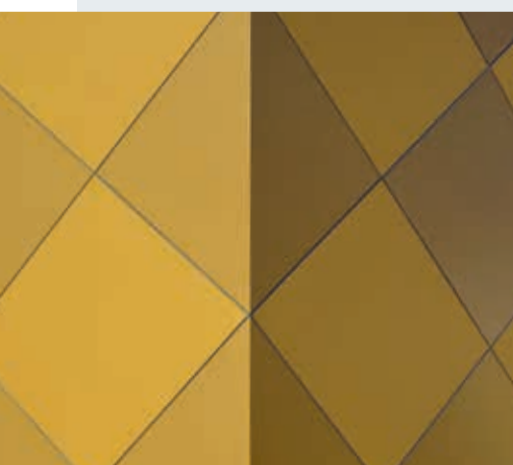
The Zwettl music association was founded in 1887. The old rehearsal room on the top floor of the council offices did not reflect the nationwide importance of the music association nor did it meet the acoustic requirements. By removing the music association from the offices, more space was created in the existing building for the increasing administrative functions. The positioning of the new building embraces the previously undefined space and improves the entrance area to the council offices.

It also gives the music association the opportunity to put on concerts within the immediate vicinity of the rehearsal room. The contemporary, minimalist and cubic architectural style of the new

building forms a deliberate contrast to the neighbouring council offices. The building structure rises slightly above an all-round strip of windows to allow light into the ground floor which accommodates the social areas. From the outside, only the actual rehearsal room with a ceiling height of five metres is apparent. The façade design in the shape of gold-coloured, diamond-shaped PREFA aluminium composite panels was inspired by the association's brass instruments and the pattern on their costumes. With the musicians' new home, the borough of Zwettl is clearly underlining the fact that the music association plays a central role in the community and beyond.

ROOF PARAPET FLASHING

WITH CANTED PREFAB ALUMINIUM COMPOSITE PANEL



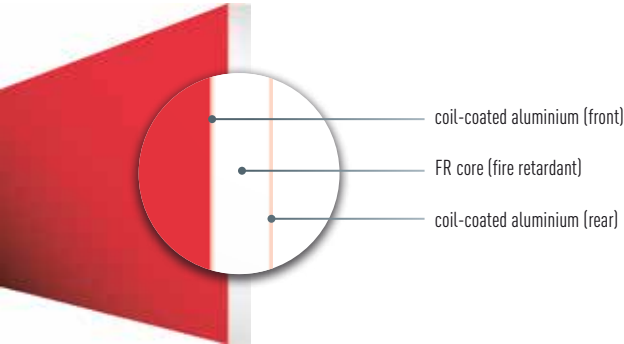
Clear facts: the façade delivers what PREFA promises

TECHNICAL DETAILS

The PREFA aluminium composite panel has nothing but advantages to offer. For example, it is highly resistant to corrosion, particularly weather-resistant, and has high deflection stiffness and shock resistance. In addition, the PREFA aluminium composite panel offers a high degree of design freedom with all the advantages of ventilated façades. And all of that with a minimum weight of just 7.5 kg/m².

LOW FLAMMABILITY

Only the best quality will do for the highest demands. For this reason, the PREFA aluminium composite panel is already fitted as standard with a fire-retardant core.



CERTIFICATIONS

FIRE-PROTECTION CERTIFICATION IN EUROPE			
Country	Aluminium composite panel	Standard	Classification
Austria	FR	EN 13501	B-s1-d0
Germany	FR	DIN	B1
Switzerland	FR	VKF	5.3

MECHANICAL SYSTEM CERTIFICATIONS EUROPE			
Country	Aluminium composite panel	Reference	No.
Germany	System	General authorisation of building products	2/07 – 1244

GENERAL KEY FIGURES

ELEMENT	UNIT	COMPOSITE PANEL FR
Thickness	mm	4
Weight	kg/m²	7.5
Sound attenuation	dB	26
Thermal expansion coefficient	mm/m/°C	0.024

WEIGHT COMPARISONS

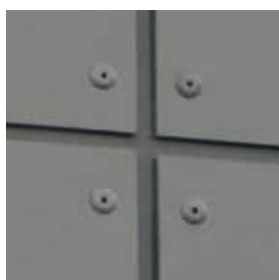
Weight of composite panel FR (kg/m²)	7.5
Material thickness (mm)	4
Weight of fibre cement façade panel (kg/m²)	approx. 12.4
Standard thickness (mm)	8
Weight of HPL façade panel	approx. 11.6
Standard thickness (mm)	8



Product: PREFA aluminium composite panel
Colour: black grey
Location: Walenstadtberg (Switzerland)
Installed by: Matthias Beerli

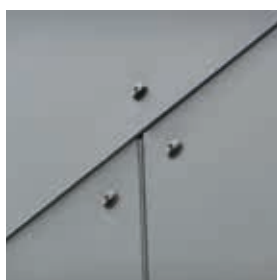
Faster, better, longer-lasting: from sprint installation to marathon use

FASTENING OPTIONS



RIVETS

The panels can be professionally fastened to the metal substructure with PREFA façade rivets.



SCREWS

The PREFA screw system is used on wooden substructures.



ADHESIVE BONDING

The panels can be mounted without any visible fastening elements.

PROCESSING OPTIONS



CUTTING



PUNCHING



SAWING



DRILLING



MILLING
CONTOUR
MILLING



PANEL BENDING



EXTRUDED PROFILES AND CORRUGATED PROFILE

The solution
for serious challenges

Product: PREFA serrated profile
Colour: anodised special colour
Location: Saillon (Switzerland)
Architect: Anako'architecture Sàrl
Installed by: Eddy Buchars SA



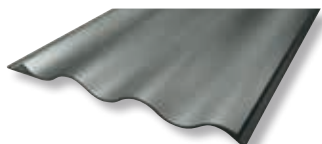
The magic of contemporary architecture: innovative technology, creatively brought into shape

Product: PREFA serrated profile
Colour: special colour
Location: Collonges (Switzerland)
Architect: Cheseauxrey Architects
Installed by: Coutaz SA



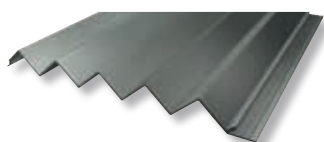
PREFA RIPPLE PROFILE

Bold architectural ideas are in high demand. The necessary material is at the ready: the PREFA ripple profile made of 2 mm-thick strong, extruded aluminium alloy for the highest shape retention and superior resistance even under extreme strain. The concealed fastening, fine material structure and elegant appearance make extruded profiles the ideal material for architectural projects designed to last for generations.



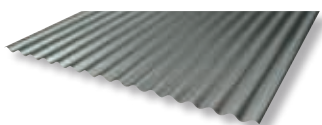
PREFA SERRATED PROFILE

The serrated profile creates very individual aspects on a building. The serrations create a particularly attractive interplay of light and shade on the façade. Creative architects use the PREFA serrated profile to conjure up lovely light effects on large-scale façades which generate fresh enthusiasm every day. The high-quality material and meticulous implementation guarantee decades of delight with this façade.



PREFA CORRUGATED PROFILE

The art often lies in endowing an unassuming building with striking elegance. The roll-shaped PREFA profiles offer unlimited scope for design in projects with tight budgets. An especially attractive characteristic in this respect: the PREFA corrugated profile can be rounded both lengthwise and at right angles to the direction of the profile.



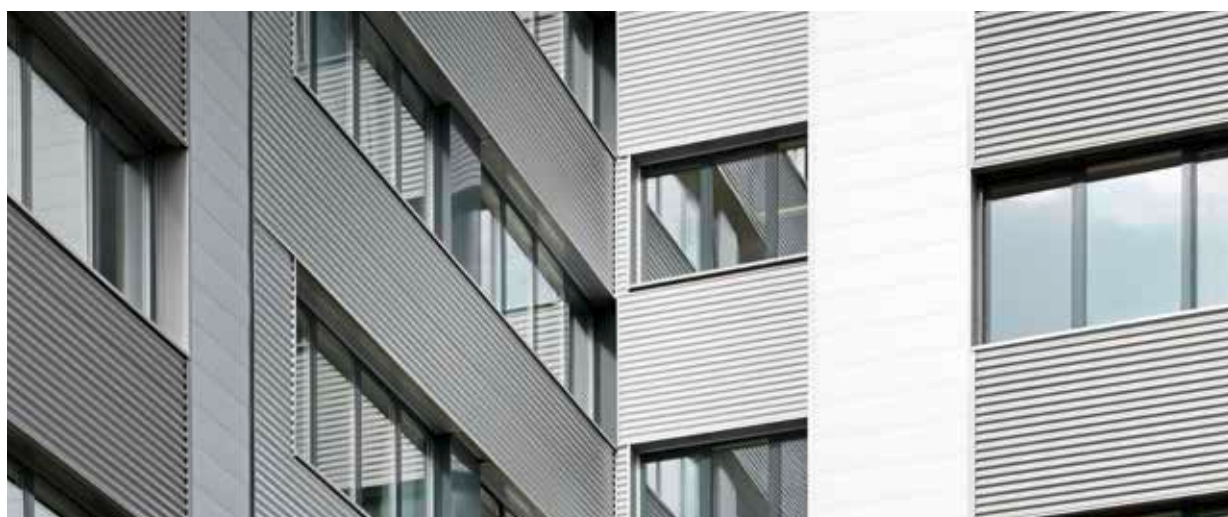
PREFA EXTRUDED PROFILES — TECHNICAL DATA

Material	extruded aluminium alloy, including a wide range of accessories
Fastening	with concealed screws
Surface	uncoated, powder-coated or anodised
Size	profile height/spacing/material thickness ripple profile: 10/47/2.00 mm; width: 140 mm serrated profile: 22/40/2.00 mm; width: 200 mm
Weight	ripple profile: 6.62 kg per m ² serrated profile: 7.5 kg per m ²

PREFA CORRUGATED PROFILE — TECHNICAL DATA

Material	powder-coated aluminium alloy; front: coil-coated with protective film; rear: protective paint
Fastening	screwed onto the aluminium substructure
Size	1,068 mm; storage length: 6,000 mm (individual lengths possible according to the specific building)
Distance between corrugations	76 mm
Profile height	18 mm
Weight	3.3 kg/m ² (material thickness: 1.0 mm) 2.3 kg/m ² (material thickness: 0.7 mm)

Product: PREFA
corrugated profile
Colour: metallic silver
Location: Austria
Architect: Schaffer





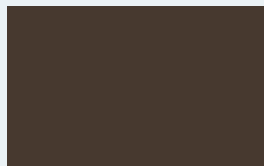
THE PREFA COLOUR RANGE

for façade systems

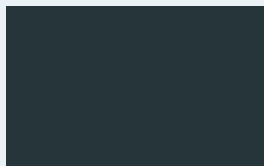
- | | | |
|--------------------------------|--|------------------------|
| 1 rhomboid façade tile 20 × 20 | 2 rhomboid façade tile 29 × 29 44 × 44 | 3 façade shingle |
| 4 FX.12 façade panel | 5 siding 138 × 0.70 mm | 6 siding 200 × 1.00 mm |
| 7 siding 300 × 1.20 mm | 8 aluminium composite panel | 9 Prefalz |

PREFA P.10

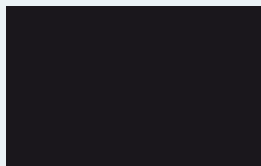
THE TOUGH ALUMINIUM INNOVATION



01 brown P.10



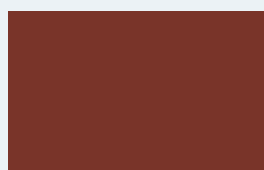
02 anthracite P.10



03 black P.10 (own colour)



04 brick red P.10



05 oxide red P.10



06 moss green P.10 (similar to RAL 6005)



NEW!



07 light grey P.10



08 zinc grey P.10 (own colour)



NEW!



10 prefa white P.10 (similar to RAL 9002)



NEW!



11 nut brown P.10 (own colour)



NEW!



41 rust brown P.10*



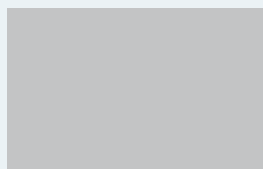
42 sand brown P.10*



43 stone grey P.10*

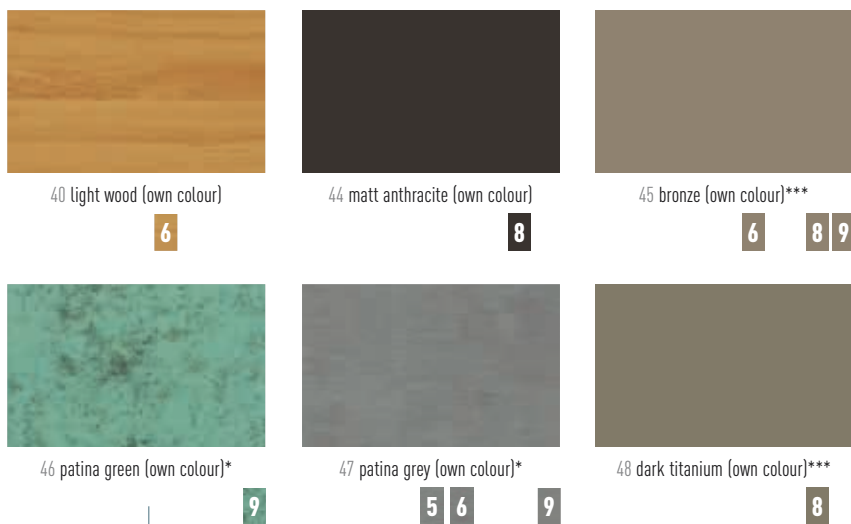
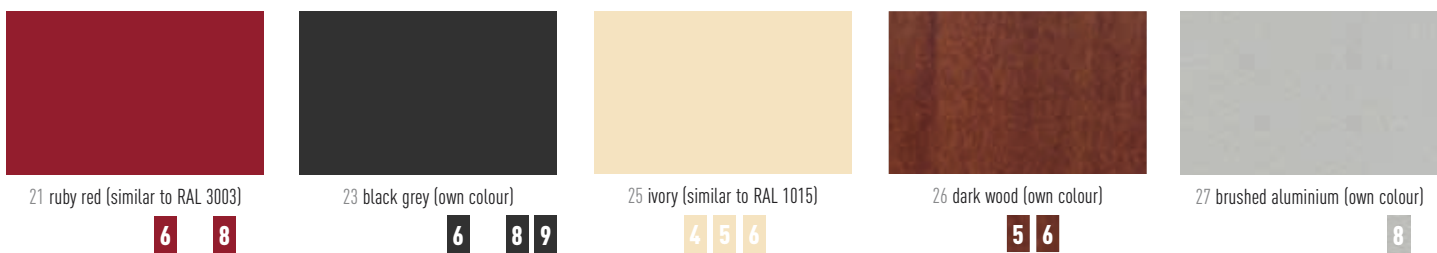
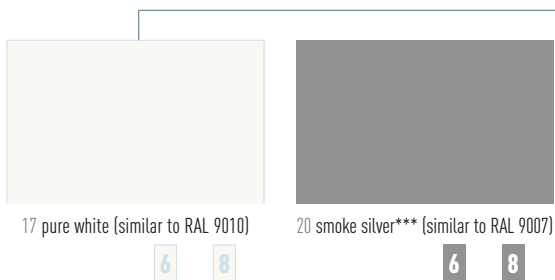


12 metallic silver*** (similar to RAL 9006)



13 plain aluminium **/***





* The recreated natural colouring of the stone grey P.10 colour varies widely in shade, giving the product its distinctive character. This also applies to the sand brown, rust brown, patina green, patina grey and plain aluminium colours.

** Surface appearance alterations caused by processing are not covered by the guarantee. Follow the instructions.

*** Colour differences may occur when coating metal-effect colours.



THE PREFA PRODUCT RANGE

at a glance

SMALL FORMAT ROOF AND FAÇADE SYSTEMS

PREFA ROOF TILE FOR ROOFS AND FAÇADES

Size 600 × 420 mm (cover)



NEW!

PREFA R.16 ROOF TILE NEW! FOR ROOFS

Size 700 × 420 mm (cover)



PREFA ROOF AND FAÇADE SHINGLE FOR ROOFS AND FAÇADES

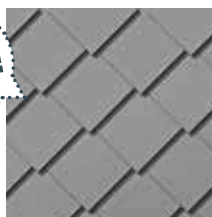
Size 420 × 240 mm (cover)



PREFA RHOMBOID ROOF TILE 29 × 29 FOR ROOFS with ridge

Size 290 × 290 mm (cover)

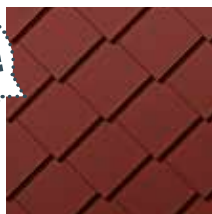
NEW!



PREFA RHOMBOID ROOF TILE 44 × 44 NEW! FOR ROOFS

Size 437 × 437 mm (cover)

NEW!



PREFA RHOMBOID FAÇADE TILE 20 × 20 FOR FAÇADES

Size 200 × 200 mm (cover)

PREFA RHOMBOID FAÇADE TILE 29 × 29 FOR FAÇADES

Size 290 × 290 mm (cover)

PREFA RHOMBOID FAÇADE TILE 44 × 44 FOR FAÇADES NEW!

Size 437 × 437 mm (cover)

PREFA FX.12 ROOF AND FAÇADE PANEL FOR ROOFS AND FAÇADES

Size 700 × 420 mm and 1,400 × 420 mm



PREFA SOLAR ACCESSORIES

SOLAR PANEL FASTENING SYSTEM AND ACCESSORIES





PREFA ALUMINIUM COMPOSITE PANEL

FOR FAÇADES

Size 1,500 × 4,010 × 4.0 mm



PREFA SIDING

FOR FAÇADES

Size from 0.7 × 138 × 500 up to 6,200 mm

from 1.0 × 200 × 500 up to 6,200 mm

from 1.2 × 300 × 500 up to 6,200 mm



PREFALZ

FOR ROOFS

Size 0.7 × 500 mm, 0.7 × 650 mm

FOR FAÇADES

Size 0.7 × 500 mm



PREFA EXTRUDED PROFILES

PREFA RIPPLE PROFILE FOR FAÇADES

Size 10/47/2.0 mm; width: 140 mm | **Weight** 6.62 kg/m²

PREFA SERRATED PROFILE FOR FAÇADES

Size 22/40/2.0 mm; width: 200 mm | **Weight** 7.5 kg/m²



PREFA CORRUGATED PROFILE

FOR FAÇADES

Size 18/76/0.7 or 1.0 mm; width: 140 mm

Weight 2.3–3.3 kg/m²



ROOF DRAINAGE

COMPLETE SYSTEM

SEPARATE COMPONENTS FOR GUTTERS AND PIPES

Gutters, box gutters, on-roof gutters



PREFA SQUARE DOWNPIPE

SEPARATE COMPONENTS FOR GUTTERS AND PIPES

Dimensions 100 × 100 mm



**THE ROOF
AS STRONG AS A BULL!**

THE PREFA GROUP

AUSTRIA 3182 Marktl/Lilienfeld
T + 43 2762 502-0, E office.at@prefa.com

GERMANY 98634 Wasungen
T + 49 36941 785-0, E office.de@prefa.com

SWITZERLAND 8800 Thalwil
T + 41 71 952 68 19, E office.ch@prefa.com

ITALY 39100 Bolzano
T + 39 0471 068680, E office.it@prefa.com

FRANCE 73190 Challes-les-Eaux
T + 33 4 79 44 84 58, E office.fr@prefa.com

THE CZECH REPUBLIC 19300 Prague
T + 420 234 496 501, E office.cz@prefa.com

HUNGARY 2040 Budaörs
T + 36 23 511-670, E office.hu@prefa.com

POLAND 02-295 Warsaw
T + 48 22 720 62 90, E office.pl@prefa.com

SWEDEN 23291 Arlöv
T + 46 10 498 66 60, E office.se@prefa.com

www.prefa.com

10 GOOD REASONS FOR CHOOSING PREFA

- ! **STORM-PROOF**
- ! **RUST-PROOF**
- ! **BREAK-PROOF**
- ! **LIGHT**
- ! **BEAUTIFUL**
- ! **COLOUR-FAST SURFACE**
- ! **GREAT FOR RENOVATIONS**
- ! **COMPLETE SYSTEM**
- ! **ENVIRONMENTALLY FRIENDLY**
- ! **40-YEAR GUARANTEE**



THE PREFA GROUP IS REPRESENTED IN THE FOLLOWING COUNTRIES:

Austria, Germany, Switzerland, Italy, France, Belgium, the Netherlands, Luxembourg, Denmark, Sweden, Norway, the Czech Republic, Slovakia, Hungary, Poland, Slovenia, Croatia, Estonia, Latvia, Lithuania, Russia, Great-Britain

* The colour guarantee ensures that the painted surface is protected from chips and blistering under the terms specified in the guarantee certificate. You can find more information on the material and colour guarantee at www.prefa.com/Garantee
Photos: PREFA | Croce & Wir | Marion Lafogler | Werner Jäger
Subject to technical modifications and printing errors. Printed colours may vary from the original material. 04.2017 | KBO | MF