

2020

## GALLERY

United Kingdom and Ireland

Contact us to book



# Introduction

**Company Profile** VMZINC® has been manufacturing a wide range of rolled zinc products used primarily for building envelopes since 1837. In addition to batten cap and standing seam roof systems, products include rainwater systems, a wide range of cladding systems, including a number of rainscreen facade products. Since its creation the company has also produced decorative roofing products such as dormers, bull's eyes, weather vanes, finials and balustrades.



- Benefits of VMZINC**
- Lightweight and durable
  - Fully recyclable
  - A service life of 100 years
  - Virtually maintenance-free
  - Can be installed on roof pitches as low as 3°
  - Complex shapes can be clad using VMZINC
  - All flashings and trim can be in the same material
  - BRE EPD profile 15804
  - BBA certified
  - Conforms to EN 988
  - Fire performance rating 'AA' - BS 476: Part 3 ('low vulnerability' class in Scotland). Fire classification according to EN 13501-1 - A1 - A2-s1,d0
  - Available in a choice of either natural finish or 8 pre-weathered finishes as well as Bespoke PIGMENTO colours
  - Cost effective
  - Wide range of panel types



VMZINC Finishes

# Contents

## Educational/ Cultural/ Recreational Buildings



4 Charterhouse School - Chemistry Building



5 University of East Anglia - Science Teaching



6 RHS - Visitor and Learning Centre



8 Jim Clark Motorsport Museum



9 The Bull Pub



10 St Mary's Church



11 Wells Maltings - Cultural Centre

## Public/Private Housing



12 Smith's Dock - Apartments



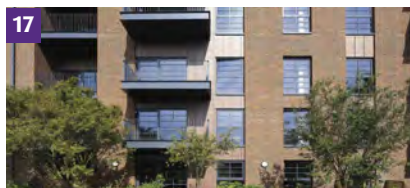
14 Water End - Private House



15 The Old Dairy - Apartments



16 Paternoster Lodge - Private House



17 South West Lands - Apartments



18 Cambridge - Private House



19 Waterbrook View 1, 2 and 3 - Private Houses



20 House Lessans - Private House



21 Holes Bay - Apartments

## Public Service/ Commercial Buildings



22 Harrogate Civic Headquarters - Offices



23 Promega Headquarters - Offices

# Educational/cultural/recreational buildings

## Public school

**Charterhouse  
School,  
New Chemistry  
Building,  
Godalming,  
Surrey**

**Architect**  
Design Engine

**Contractor**  
Salmon Solutions

**Type of zinc**  
PIGMENTO BROWN PLUS

**System used**  
Standing seam roofing  
and cladding

**Surface area of zinc**  
1800m<sup>2</sup>

**Photo credit**  
Paul Kozlowski



# Educational/cultural/recreational buildings

## University

### University of East Anglia, The New Science Teaching Building

#### Architect

Fraser Brown  
Mackenna Architects

#### Contractor

Zink It Ltd

#### Type of zinc

ANTHRA-ZINC PLUS

#### System used

Flat lock shingles

#### Surface area of zinc

2200m<sup>2</sup>

Photo credit  
Paul Kozlowski



# Educational/cultural/recreational buildings

## Visitor and learning centre

**Royal Horticultural  
Society,  
Hyde Hall,  
Chelmsford**

**Architects**

Cullinan Studio and  
Concertus Design and  
Property Consultants

**Contractor**

Bridgehill Specialist  
Roofing

**Type of zinc**

PIGMENTO BROWN PLUS,  
ANTHRA-ZINC PLUS and  
QUARTZ-ZINC PLUS

**System used**

Standing seam roofing  
and cladding

**Surface area of zinc**  
2000m<sup>2</sup>

**Photo credit**  
Paul Kozlowski





# Educational/cultural/recreational buildings

## Museum

**Jim Clark  
Motorsport  
Museum,  
Duns,  
Scottish Borders**

**Architect**  
Scottish Borders  
Council

**Contractor**  
Pinnacle Roofing

**Type of zinc**  
ANTHRA-ZINC PLUS

**System used**  
Standing seam cladding

**Surface area of zinc**  
150m<sup>2</sup>

**Photo credit**  
Architect



# Educational/cultural/recreational buildings

## Public house

### The Bull Pub, Bracknell

**Architect**  
Piper Whitlock  
Architects

**Contractor**  
Eco Roofing

**Type of zinc**  
ANTHRA-ZINC PLUS

**System used**  
Standing seam roofing  
and cladding

**Surface area of zinc**  
800m<sup>2</sup>

**Photo credit**  
Paul Kozlowski



# Educational/cultural/recreational buildings

## Church

### St Mary's Church, Tamnaherin, Northern Ireland

**Architect**  
Liam McLaughlin  
Architects

**Contractor**  
DM Specialist Roofing Ltd

**Type of zinc**  
PIGMENTO BROWN PLUS

**System used**  
Standing seam roofing  
and cladding

**Surface area of zinc**  
700m<sup>2</sup>

**Photo credit**  
Paul Kozlowski



# Educational/cultural/recreational buildings

## Cultural centre

**Wells Maltings,  
Wells-next-the-sea,  
Norfolk**

**Architect**  
Chaplin Farrant  
Architects

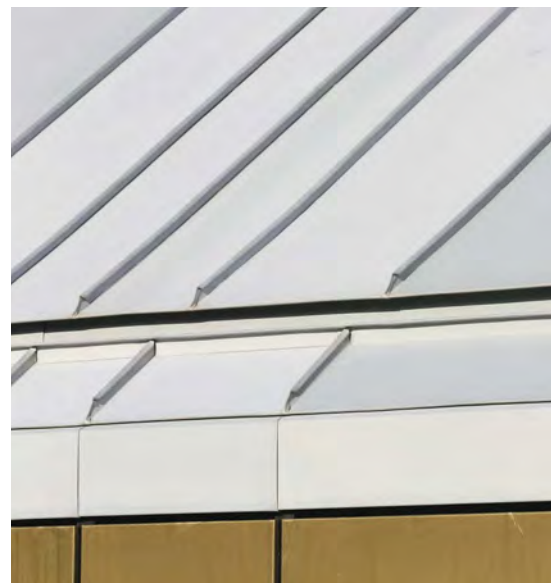
**Contractor**  
Varla Cladding Ltd

**Type of zinc**  
AZENGAR PLUS

**System used**  
Standing seam roofing  
and cladding

**Surface area of zinc**  
500m<sup>2</sup>

**Photo credit**  
Paul Kozlowski



# Public/private housing

## Apartments

**Smith's Dock,  
Places for People,  
North Shields**

**Architect**

Simpson Haugh  
Architects

**Contractor**

Longworth Building  
Services Ltd

**Type of zinc**

PIGMENTO RED PLUS

**System used**

Standing seam roofing  
and cladding

**Surface area of zinc**

4500m<sup>2</sup>

**Photo credit**

Paul Kozlowski





# Public/private housing

## Private house

**Water End,  
Lake District  
National Park**

**Architect**  
Crosby Granger  
Architects

**Contractor**  
Apok Building Services

**Type of zinc**  
ANTHRA-ZINC PLUS

**System used**  
Standing seam roofing  
and cladding

**Surface area of zinc**  
300m<sup>2</sup>

**Photo credit**  
Paul Kozlowski



# Public/private housing

## Apartments

### **The Old Dairy, Bloomsbury, London**

#### **Architects**

Stanhope Gate  
Architecture and S333

#### **Contractor**

All Metal Roofing

#### **Type of zinc**

PIGMENTO BROWN and  
PIGMENTO BROWN PLUS

#### **System used**

Bespoke corrugated  
cladding panels  
by Belfry Facades and  
standing seam roofing

**Surface area of zinc**  
800m<sup>2</sup>

**Photo credit**  
Paul Kozlowski



# Public/private housing

## Private house

**Paternoster Lodge  
and Garage,  
Tolleshunt Knights,  
Maldon,  
Essex**

**Architect**  
Plater Claiborne  
Architecture and Design

**Contractor**  
Full Metal Jacket

**Type of zinc**  
QUARTZ-ZINC PLUS

**System used**  
Standing seam roofing,  
cladding and  
overlapping panels

**Surface area of zinc**  
650m<sup>2</sup>

**Photo credit**  
Paul Kozlowski



# Public/private housing

## Apartments

**South West Lands,  
Wembley Park,  
London**

**Architect**  
White Ink Architects

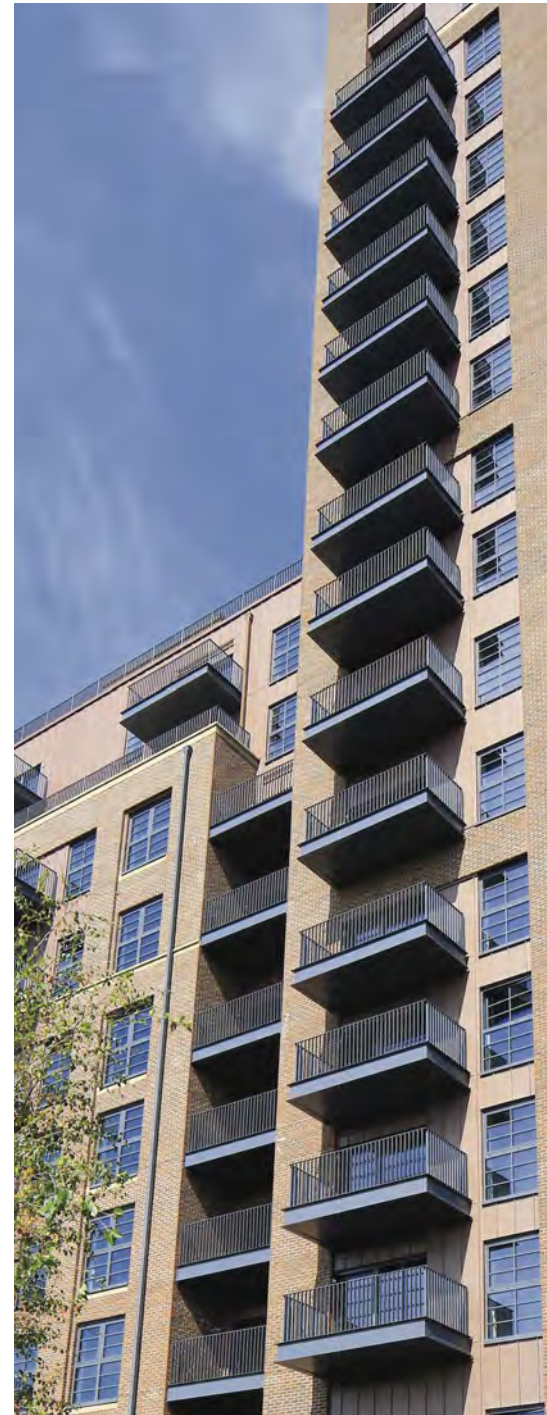
**Contractor**  
Eco Roofing

**Type of zinc**  
PIGMENTO RED PLUS  
and ANTHRA-ZINC PLUS

**System used**  
Standing seam cladding

**Surface area of zinc**  
5000m<sup>2</sup>

**Photo credit**  
Paul Kozlowski



# Public/private housing

## Private house

**Mill Road,  
Cambridge**

**Architect**  
PiP Architecture

**Contractor**  
RAC Roofing and  
Cladding Specialist

**Type of zinc**  
ANTHRA-ZINC PLUS

**System used**  
Standing seam roofing  
and cladding

**Surface area of zinc**  
300m<sup>2</sup>

**Photo credit**  
Architect



# Public/private housing

## Private houses

### **Waterbrook View 1, 2 and 3, Woodstock, Oxfordshire**

**Architect**  
Coleman Hick  
Partnership

**Contractor**  
Cotswold Metal Roofing

**Type of zinc**  
QUARTZ-ZINC PLUS

**System used**  
Standing seam roofing  
and cladding

**Surface area of zinc**  
900m<sup>2</sup>

**Photo credit**  
Architect



# Public/private housing

Private house

**House Lessans,  
County Down,  
Northern Ireland**

**Architect**  
McGonigle McGrath  
Architects

**Contractor**  
DM Specialist Roofing

**Type of zinc**  
QUARTZ-ZINC PLUS

**System used**  
Standing seam roofing  
and cladding

**Surface area of zinc**  
300m<sup>2</sup>

**Photo credit**  
Architect



# Public/private housing

## Apartments

### Holes Bay Apartments, Poole

**Architect**  
Boyle and Summers  
Architects

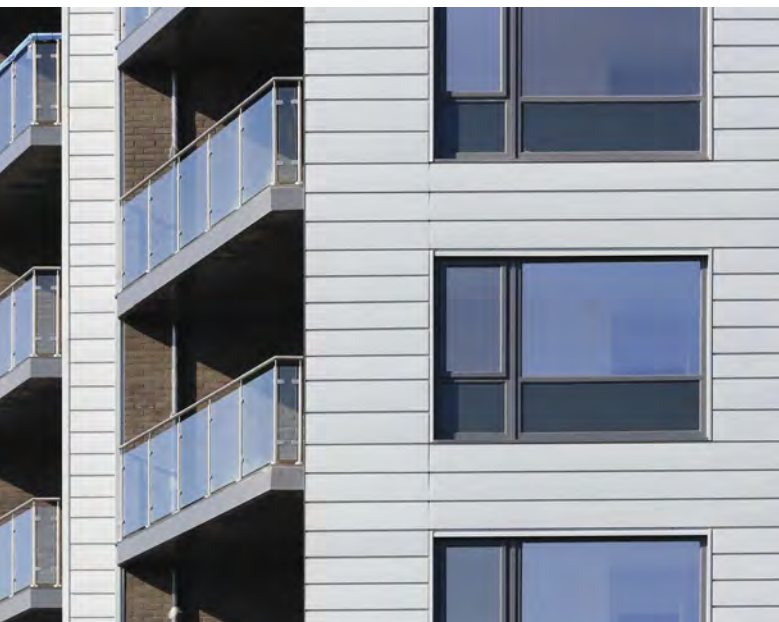
**Contractor**  
Face Facades

**Type of zinc**  
AZENGAR

**System used**  
Interlocking panels by  
Belfry Facade Systems

**Surface area of zinc**  
700m<sup>2</sup>

**Photo credit**  
Paul Kozlowski



# Public service/commercial buildings

## Offices

### Harrogate Civic Headquarters, North Yorkshire

#### Architect

Farrell & Clarke  
Architects

#### Fabricator

Belfry Facade Systems

#### Type of zinc

QUARTZ-ZINC PLUS

#### System used

Standing seam roofing

#### Surface area of zinc

3000m<sup>2</sup>

#### Photo credit

Paul Kozlowski



# Public service/commercial buildings

## Offices

### Promega Headquarters, Southampton

**Architect**  
Architecture PLB

**Contractor**  
Pace Roofing

**Type of zinc**  
PIGMENTO RED and  
PIGMENTO PLUS

**System used**  
Standing seam roofing  
and flat lock panel  
wall cladding

**Surface area of zinc**  
2500m<sup>2</sup>

**Photo credit**  
Paul Kozlowski





### Use a Professional

As well as following design recommendations it is critical that VMZINC is installed in the correct manner and by trained professionals.

VMZINC provides training for installers with experience in metal roofing and cladding in partnership with the Lead Sheet Training Academy. This training is designed to supplement trained professionals with specific information concerning VMZINC.

### VMZINC at Work

We would also recommend that contractors be members of associations such as the Federation of Traditional Metal Roofing Contractors. Furthermore, VMZINC offers a list of recognised contractors that adhere to specific conditions concerning experience and training, namely VMZINC at WORK.

### RIBA Approved CPD Seminars

Please contact us to book a CPD seminar entitled 'Zinc as Building Envelope'. This seminar covers many subjects including aesthetics, applications, design requirements, installation methods as well as sustainability.

### CAD Details

A large library of CAD drawings in both .dwg and .pdf format is available. We also offer BIM objects.

### NBS Specifications

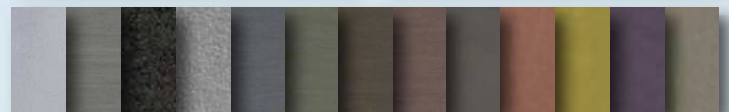
We offer specifications for all of our systems. These can be either downloaded or sent out from our office.

### Bespoke Roof and Wall Design

Panel layouts and project specific details can be created for projects when standard detailing may not quite be enough.

### Samples

Please contact us for material samples on all of our finishes. We can also send out larger samples for planning. All our literature is also available online and in paper format.



### VM Building Solutions UK

Collier House,  
Mead Lane,  
Hertford, Herts,  
SG13 7AX

vmzinc.uk@vmbuildingsolutions.com  
www.vmzinc.co.uk  
0203 445 5640

VM BUILDING SOLUTIONS